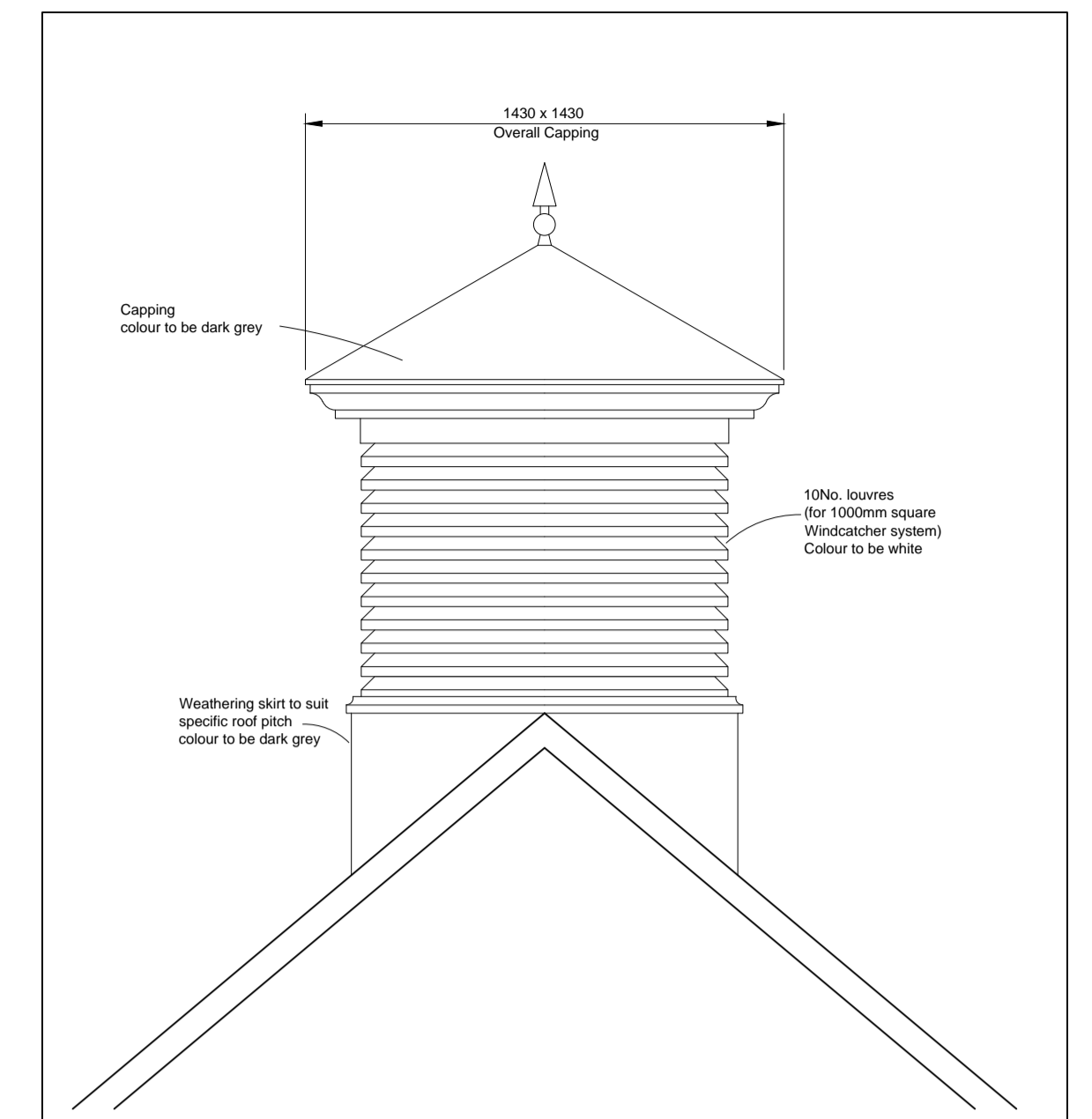
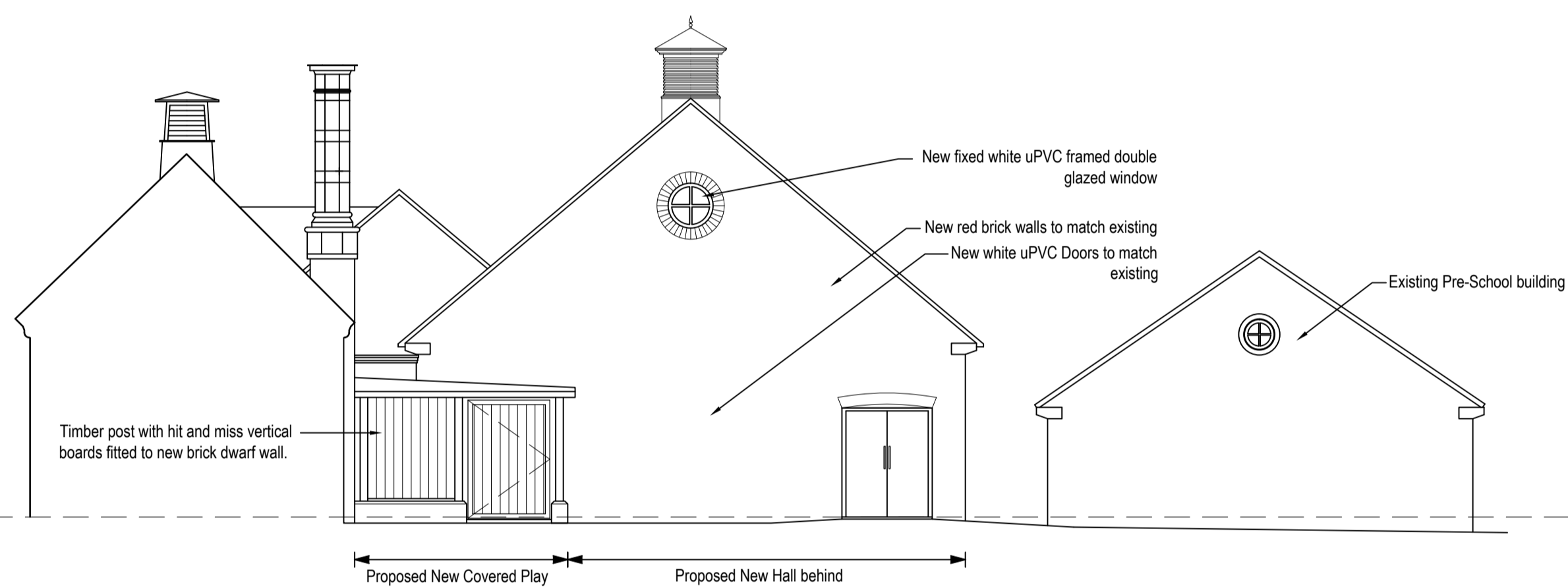


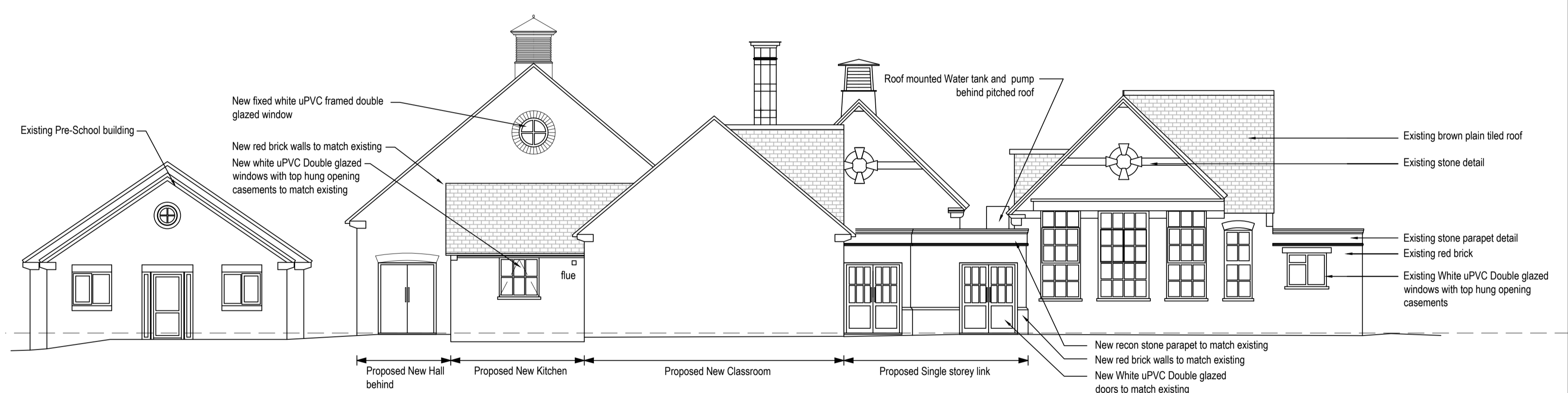
Elevation A - Scale 1:100



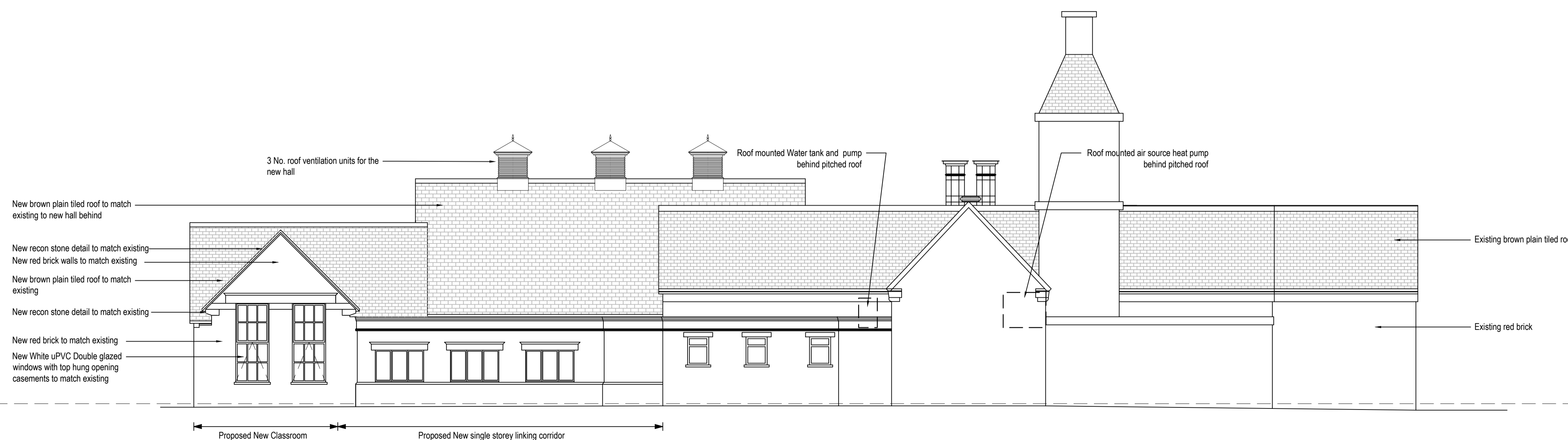
Monodraught Detail - Scale 1:20



Elevation B - Scale 1:100



Elevation C - Scale 1:100



Elevation D - Scale 1:100



0 2.5m 5m SCALE 1:100

Rev: P1: First issue for discussion. 01.02.12 cw
 P2: Updated design following plan design changes. 05.03.12 cw
 P3: Size of classroom updated following public consultation. 03.05.12 cw
 P4: Updated for planning. 09.10.12 ab
 P5: Updated Windcatchers. 05.07.13 cw
 P6: Water tank location added to flat roof. 05.07.13 cw

The Old Rectory Rectory Lane Milton Malson
 NORTHAMPTON NN7 3AQ
 t: +44 (0)1604 858916 f: +44 (0)1604 859123
 www.peter-haddon.com

php architects

NEW HALL AND CLASSROOM
 NORTHAMPTONSHIRE COUNTY COUNCIL
 GRETTON PRIMARY SCHOOL

PROPOSED ELEVATIONS

Issue Purpose:
 Drawn by: CW Checked by: OB
 Scale @ A1: 1:100 Date: DEC 2011
 CAD ref: G502 Draw no.: 3960/011 Rev: P6
 Copyright reserved. Dimensions to be checked on site. Discrepancies to be reported before proceeding.