


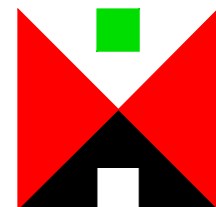


-  Denotes location of proposed acoustic enclosure
-  Site boundary to science block
-  Wollaston School site ownership boundary

DO NOT SCALE FROM DRAWING

MICHAEL HYDE AND ASSOCIATES LIMITED
chartered architects



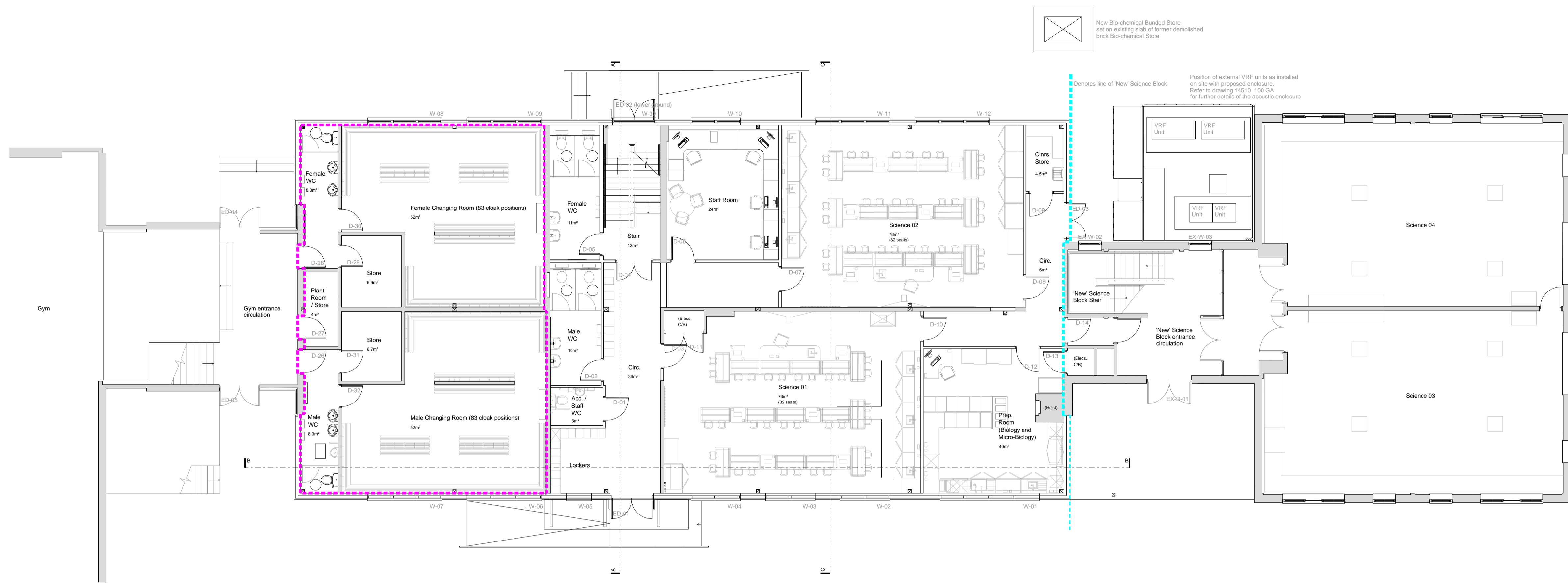
MANCHESTER SHEFFIELD

51 BARTON ARCADE ALLIANCE HOUSE
 DEANSGATE LEOPOLD STREET
 MANCHESTER M3 2BJ SHEFFIELD S1 2GY
 TEL 0161 834 1018 TEL 0114 275 9666
 FAX 0161 834 4798 FAX 0114 275 7751
 Manchester@MHA Sheffield@MHA
 architects.com architects.com

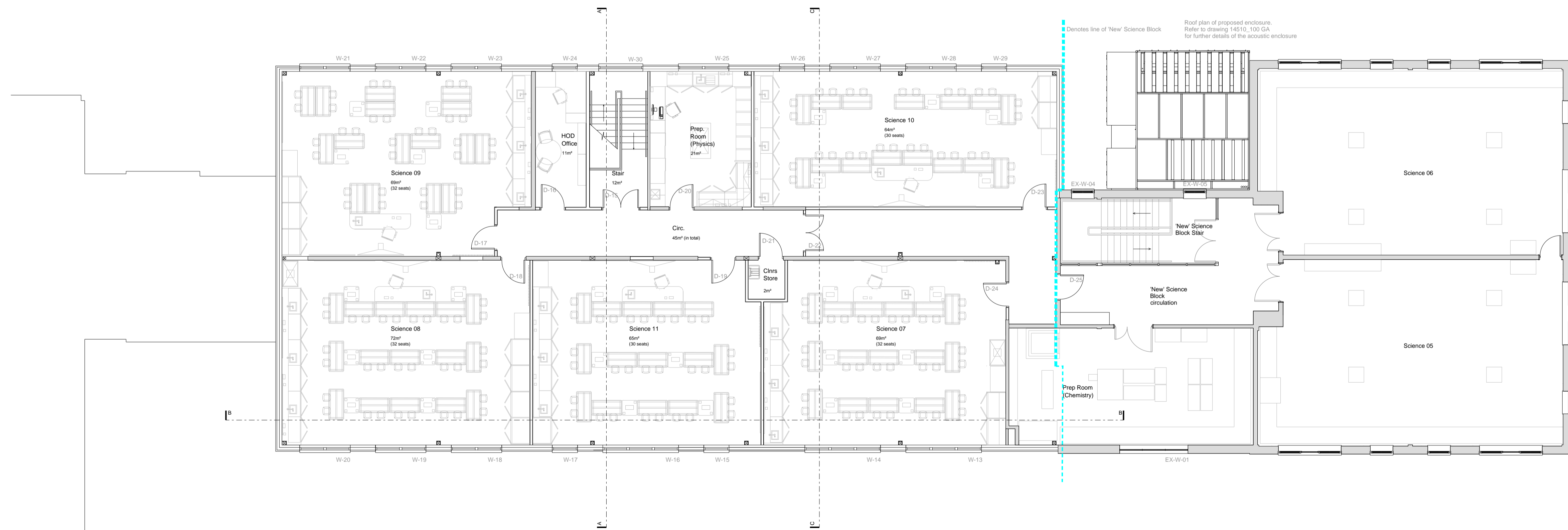
PLANNING

REV	DATE	DESCRIPTION	AD	CHKD
B	23-03-16	Acoustic enclosure location identified	CY	CY
A	28-01-14	Amendments made to site boundary information as requested.	AD	AD

PROJECT TITLE		
REFURBISHMENT OF THE OLD SCIENCE BLOCK, WOLLASTON SCHOOL, NORTHANTS		
DRAWING TITLE		
LOCATION PLAN		
DRAWN / CHECKED	DATE	SCALE
AD / AD	DEC 2013	1:2000 @ A3
JOB No	DRAWING	REVISIONS
3WS1	P01	B



GROUND FLOOR



FIRST FLOOR

PLANNING

A 300416 External VRF units and proposed enclosure added
 REV DATE DESCRIPTION
 CY CY
 DRN CHD

MICHAEL HYDE AND ASSOCIATES LIMITED
 chartered architects

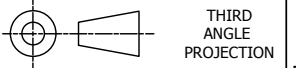
MANCHESTER □ SHEFFIELD ■
 51 BARTON ARCADE ALLIANCE HOUSE
 DEANSGATE LEOPOLD STREET
 MANCHESTER M3 2BJ SHEFFIELD S1 2GY
 TEL 0161 834 1018 TEL 0114 275 9666
 FAX 0161 834 4798 FAX 0114 275 7761
 Manchester@MHA Sheffield@MHA
 architects.com architects.com

PROJECT TITLE			
THE OLD SCIENCE BLOCK, WOLLASTON SCHOOL WOLLASTON, NORTHANTS			
DRAWING TITLE			
PROPOSAL LAYOUT PLAN			
DRAWN / CHECKED	DATE	SCALE	
AD / AD	DEC 2013	1:100 @ A1	
JOB NO.	DRAWING	REVISIONS	
3WS1	P06	A	

DO NOT SCALE FROM DRAWING

IF IN DOUBT PLEASE ASK

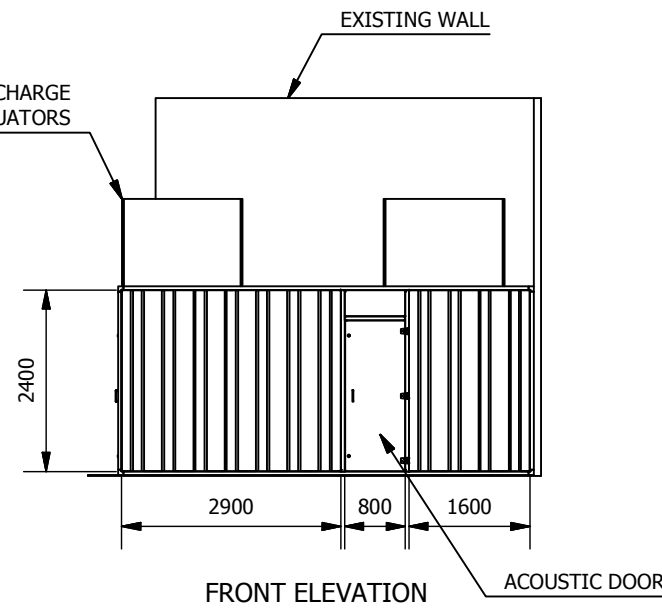
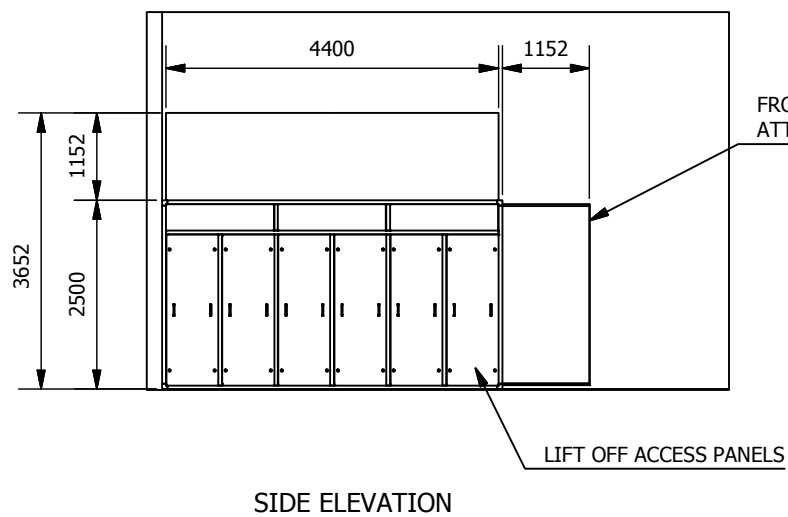
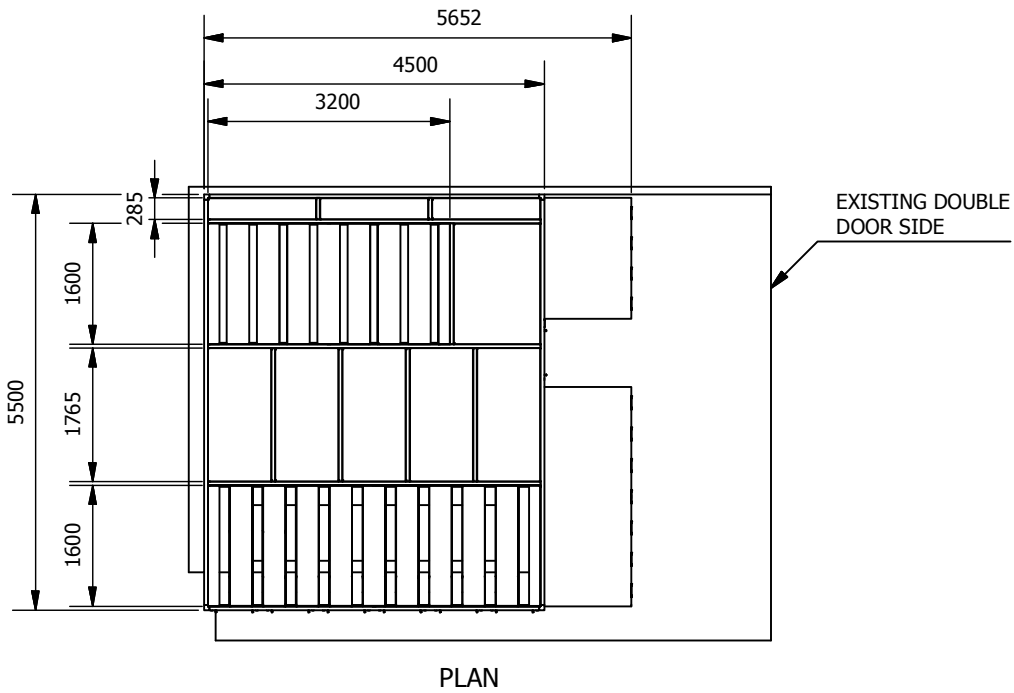
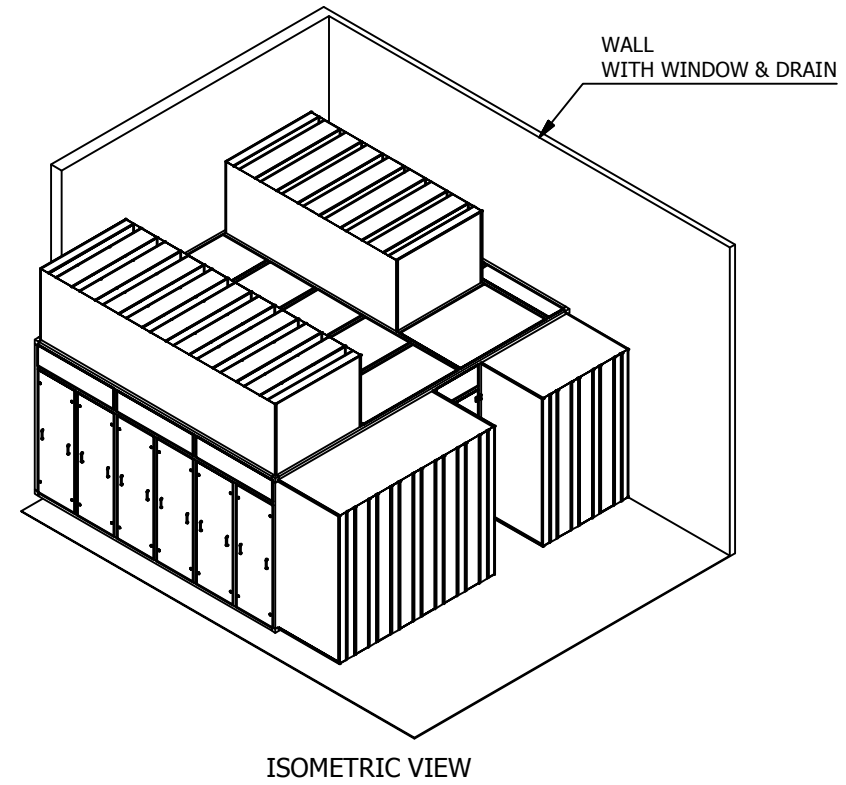
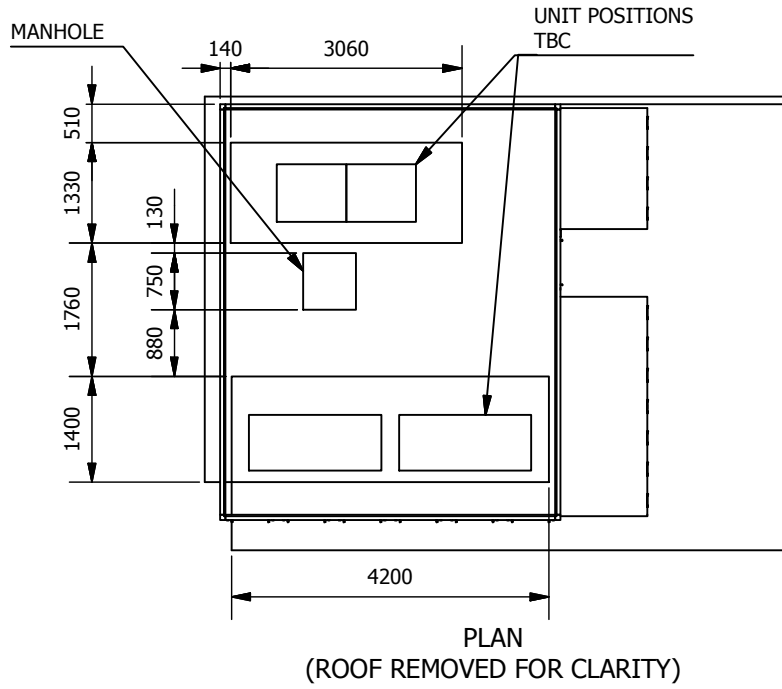
COPYRIGHT © ACE&C LTD 2015




THIRD ANGLE PROJECTION

NOTES:

1. MATERIAL: EXTRUDED ALUMINIUM FRAME.
1mm THICK PLASTISOL
OUTERSKIN PANELS C/W
PLASTERBOARD
2. FINISH: GOOSWING GREY
PLASTER SOL



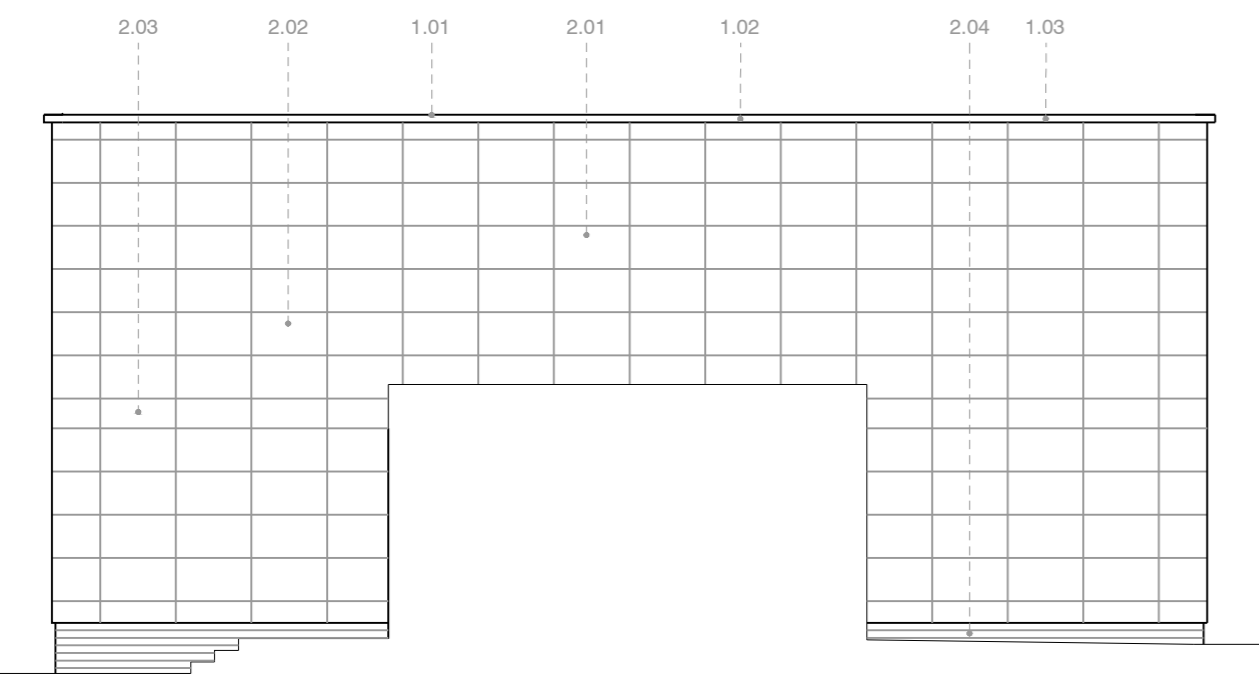
Date	REV	Author	Description	
17/08/2016	A	MS	MATERIAL, FINISH AND ANNOTATIONS ADDED	
<small>ALL DIMENSIONS ARE mm [IN] ALL ANGLES ARE 90° UNLESS OTHERWISE STATED WHEN REQUIRED ALL INTERNAL BEND RADIUS UNLESS OTHERWISE STATED WHEN REQUIRED SCALE 1 : 100@A3 UNLESS OTHERWISE STATED DO NOT SCALE FROM DRAWING</small>				
Acoustical Control Engineers and Consultants  Broadway, Bourn Cambridgeshire, CB23 2TA Tel: +44 (0)1954 718 344 Fax: +44 (0)1954 718 355 E-Mail: CAD@acoustical.co.uk www.acoustical.co.uk				
Part No	Drawn by	Date		
	MS	26/02/2016		
Scale	Checked by	Date	Approved by	Date
1 : 100@A3				
ACE P-C No		Project		
14510		WOLLASHAM SCHOOL		
G.A				
Client		Drawing No		Sheet
		14510/100		1 / 1



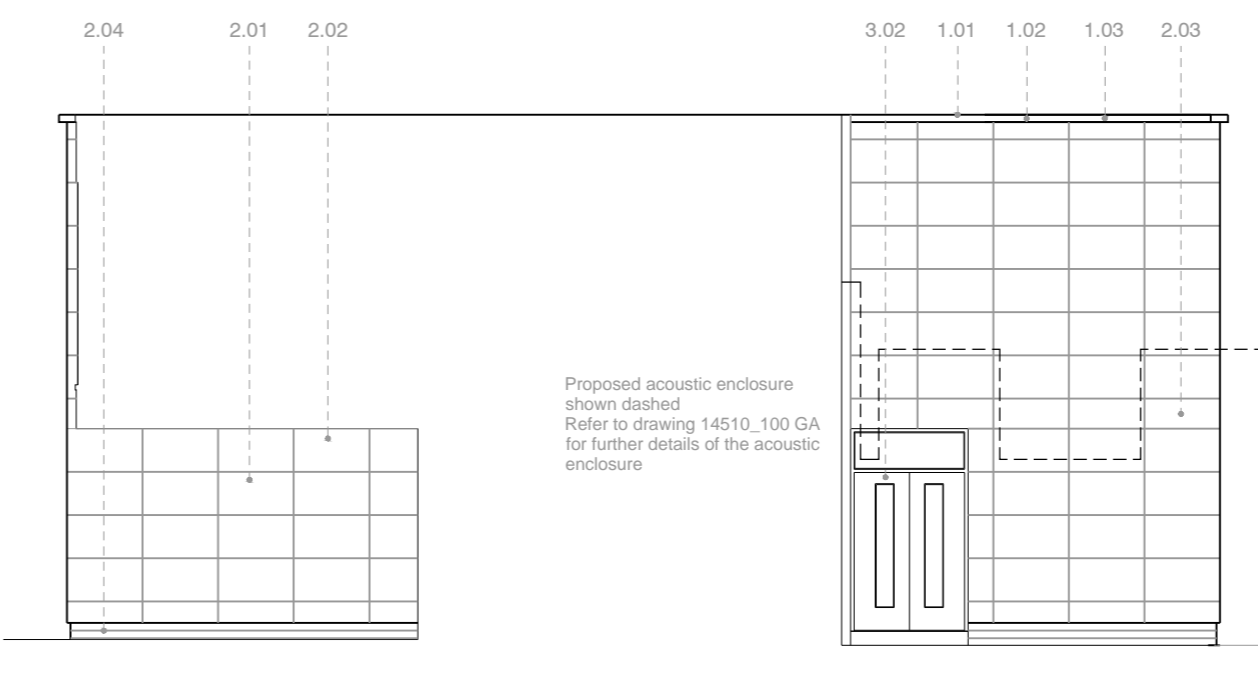
NORTH EAST FACING ELEVATION



SOUTH WEST FACING ELEVATION



SOUTH EAST FACING ELEVATION



NORTH WEST FACING ELEVATION

- MATERIALS**
- 1.00 Roof
 - 1.01 Existing recently applied replacement roofing membrane (dark grey)
 - 1.02 Connection detail between existing roof and enlargement to existing structure extent (TBC)
 - 1.03 Dark grey aluminium fascias
 - 1.04 Existing roof material / finish retained
 - 1.05 New single ply roofing membrane to be installed under a separate direct contract for the school, to be undertaken during the main works
 - 2.00 Walls
 - 2.01 Trespa cladding panel A.32.2.1/ST Translucent Green
 - 2.02 Trespa cladding panel A.30.3.2/ST Verdigris
 - 2.03 Trespa cladding panel A.25.8.1/ST Anthracite Grey
 - 2.04 Dark grey engineering brick plinth
 - 2.05 Existing finish / cladding for adjacent 'New Science Block
 - 2.06 Satin Stainless Steel surface fixed signage
 - 2.07 Ramp / Step construction finish
 - 3.00 Windows & Doors
 - 3.01 Techno Grey (RAL 7015) PPC aluminium
 - 3.02 Grey (RAL 7015) PPC aluminium framed coloured aluminium door
 - 3.03 Existing aluminium windows retained
 - 3.04 Existing doors retained
 - 4.00 Miscellaneous
 - 4.01 Grey (RAL 7015) PPC aluminium canopy with safety glass
 - 4.02 Grey (RAL 7015) PPC aluminium handrail to ramp and steps

PLANNING

REV	DATE	DESCRIPTION	CY	CY
A	06-04-16	External VRF units and proposed enclosure added		
			DRN	CHKD
PROJECT TITLE				
THE OLD SCIENCE BLOCK, WOLLASTON SCHOOL WOLLASTON, NORTHANTS				
DRAWING TITLE				
PROPOSAL ELEVATIONS				
DRAWN / CHECKED	DATE	SCALE		
AD / AD	DEC 2013	1:100 @ A2		
JOB No	DRAWING	REVISIONS		
3WS1	P08	A		

MICHAEL HYDE AND ASSOCIATES LIMITED
chartered architects

MANCHESTER SHEFFIELD

51 BARTON ARCADE LEOPOLD STREET
MANCHESTER M3 2BJ SHEFFIELD S1 2GY
TEL 0161 834 1018 TEL 0114 275 9666
FAX 0161 834 4798 FAX 0114 275 7751
Manchester@MHA Sheffield@MHA
architects.com architects.com

DO NOT SCALE FROM DRAWING

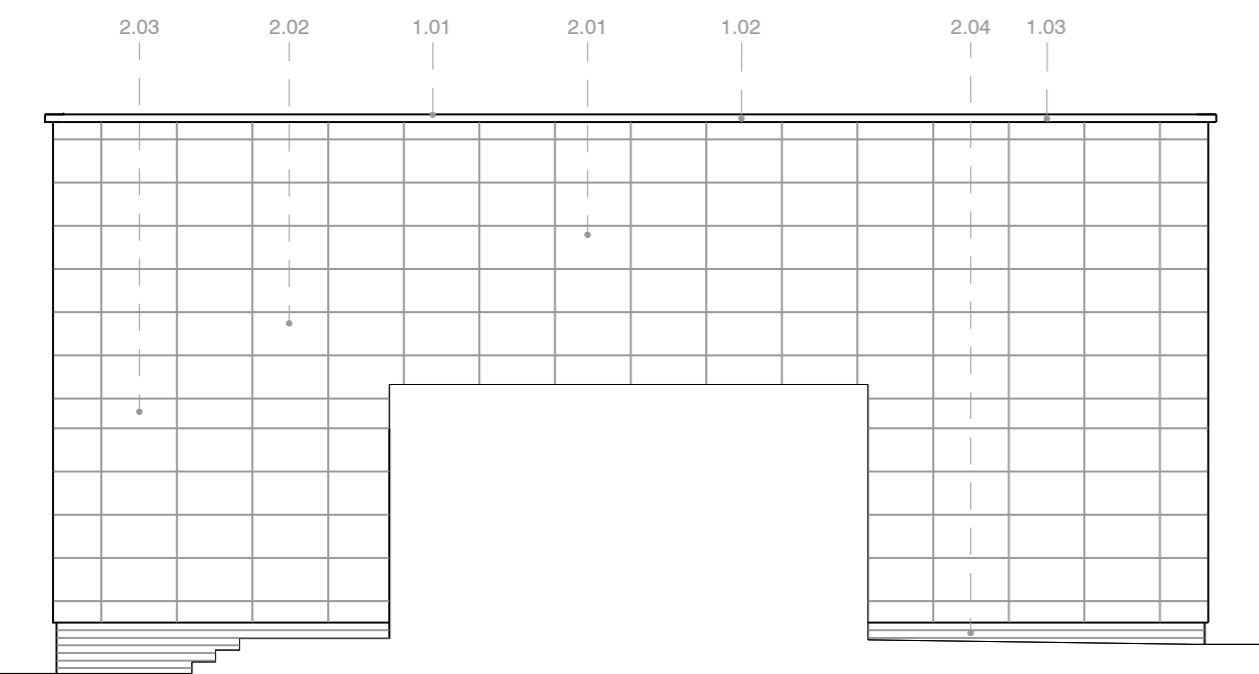


NORTH EAST FACING ELEVATION

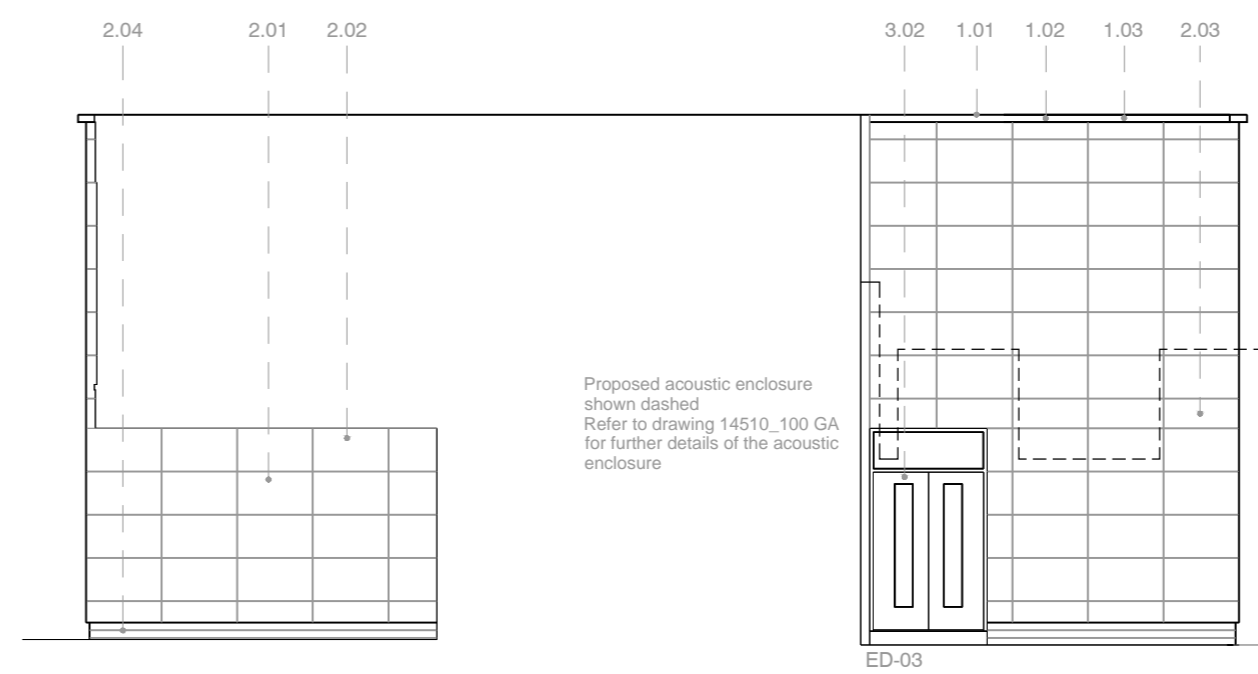


SOUTH WEST FACING ELEVATION

Position of external VRF units as installed on site with proposed enclosure. Refer to drawing 14510_100 GA for further details of the acoustic enclosure



SOUTH EAST FACING ELEVATION



NORTH WEST FACING ELEVATION

Proposed acoustic enclosure shown dashed. Refer to drawing 14510_100 GA for further details of the acoustic enclosure

MATERIALS

- 1.00 Roof
- 1.01 Existing recently applied replacement roofing membrane (dark grey)
- 1.02 Connection detail between existing roof and enlargement to existing structure extent (TBC)
- 1.03 Dark grey aluminium fascias
- 1.04 Existing roof material / finish retained
- 1.05 New single ply roofing membrane to be installed under a separate direct contract for the school, to be undertaken during the main works
- 2.00 Walls
- 2.01 Trespa cladding panel A.32.2.1/ST Translucent Green
- 2.02 Trespa cladding panel A.30.3.2/ST Verdigris
- 2.03 Trespa cladding panel A.25.8.1/ST Anthracite Grey
- 2.04 Dark grey engineering brick plinth
- 2.05 Existing finish / cladding for adjacent 'New' Science Block
- 2.06 Satin Stainless Steel surface fixed signage
- 2.07 Ramp / Step construction finish
- 3.00 Windows & Doors
- 3.01 Techno Grey (RAL 7015) PPC aluminium
- 3.02 Grey (RAL 7015) PPC aluminium framed coloured aluminium door
- 3.03 Existing aluminium windows retained
- 3.04 Existing doors retained
- 4.00 Miscellaneous
- 4.01 Grey (RAL 7015) PPC aluminium canopy with safety glass
- 4.02 Grey (RAL 7015) PPC aluminium handrail to ramp and steps

PLANNING

REV	DATE	DESCRIPTION	CY	CY
A	06-04-16	External VRF units and proposed enclosure added		

PROJECT TITLE		
THE OLD SCIENCE BLOCK, WOLLASTON SCHOOL WOLLASTON, NORTHANTS		
DRAWING TITLE		
PROPOSAL ELEVATIONS - WINDOW & DOOR REFERENCES		
DRAWN / CHECKED	DATE	SCALE
AD / AD	DEC 2013	1:100 @ A2
JOB No	DRAWING	REVISIONS
3WS1	P09	A

MICHAEL HYDE AND ASSOCIATES LIMITED
chartered architects



MANCHESTER SHEFFIELD

51 BARTON ARCADE
DEANSGATE
MANCHESTER M3 2BJ
TEL 0161 834 1018
FAX 0161 834 4798
Manchester@MHA
architects.com

ALLIANCE HOUSE
LEOPOLD STREET
SHEFFIELD S1 2GY
TEL 0114 275 9666
FAX 0114 275 7751
Sheffield@MHA
architects.com

DO NOT SCALE FROM DRAWING