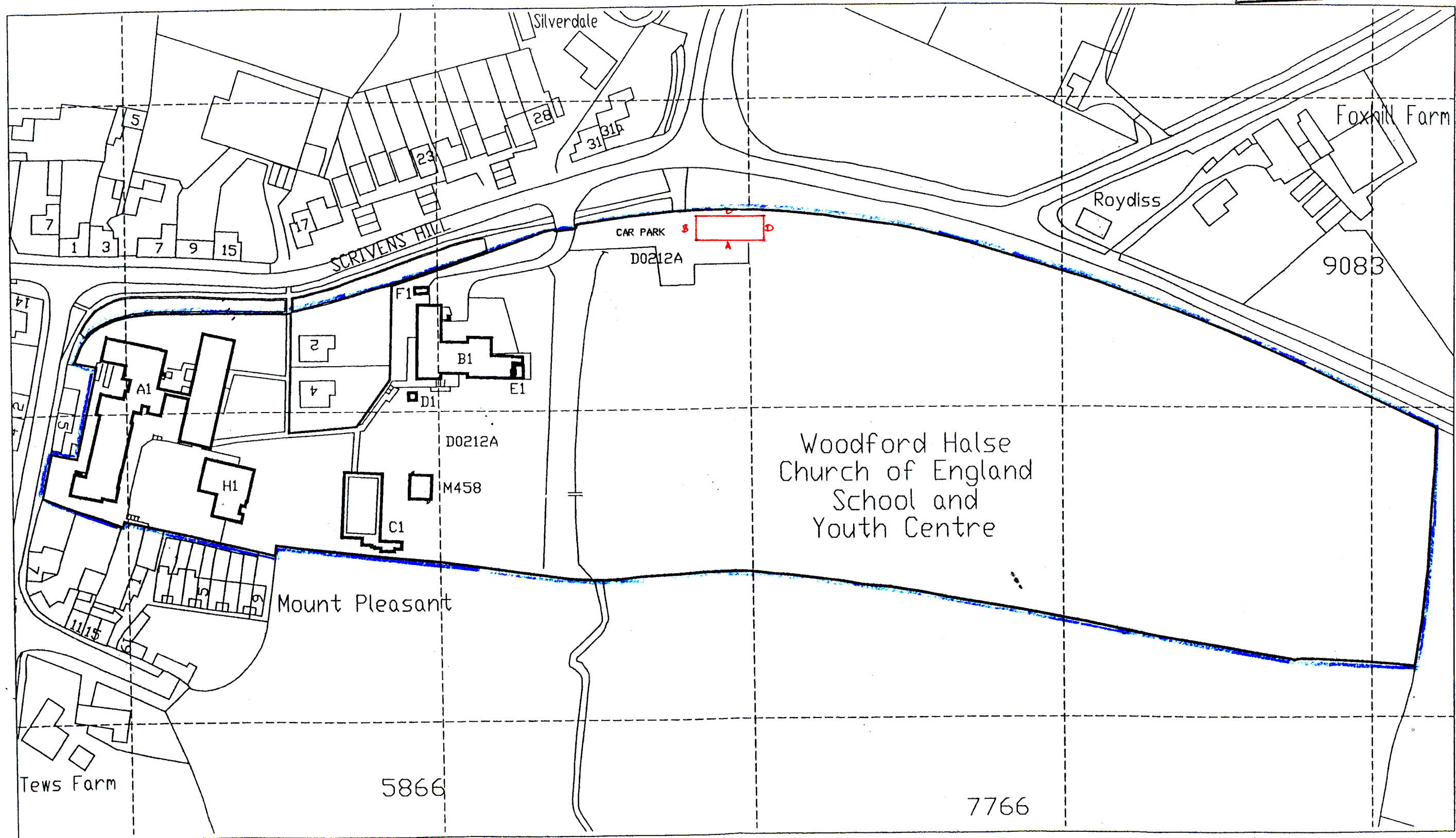


NORTHAMPTONSHIRE
COUNTY COUNCIL
- 6 OCT 2006
GROWTH MANAGEMENT

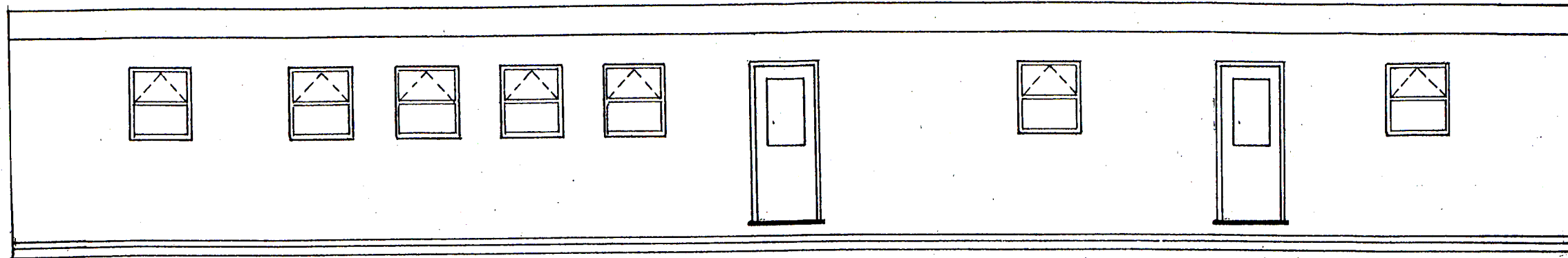


AREA	SITE	AREA
GSA	D0212A	4.251 ha
DSA	D0212A	0.607 ha
USA	D0212A	3.644 ha

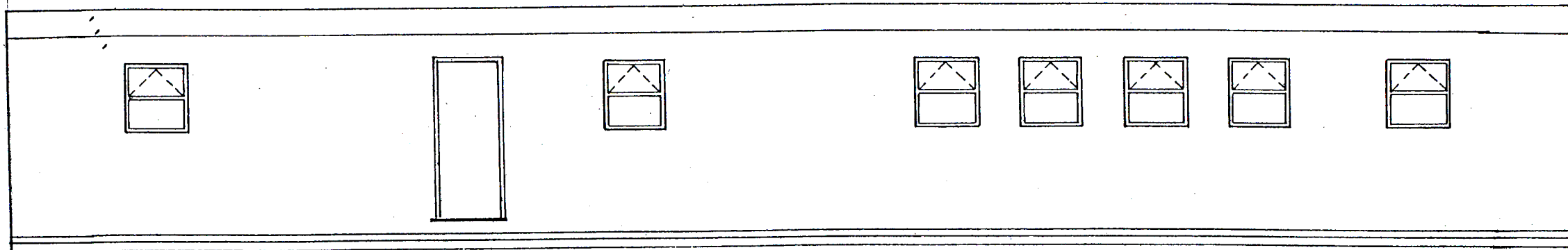
This drawing is for reference only.
For accurate information on boundaries,
please refer to the County Tetter.

"This map is reproduced from Ordnance Survey material with the permission of Ordnance Survey on behalf of the Controller of Her Majesty's Stationary Office. Crown copyright. Unauthorised reproduction infringes Crown copyright and may lead to prosecution or civil proceedings.
Northamptonshire County Council: Licence No. 100019331. Published 2005."

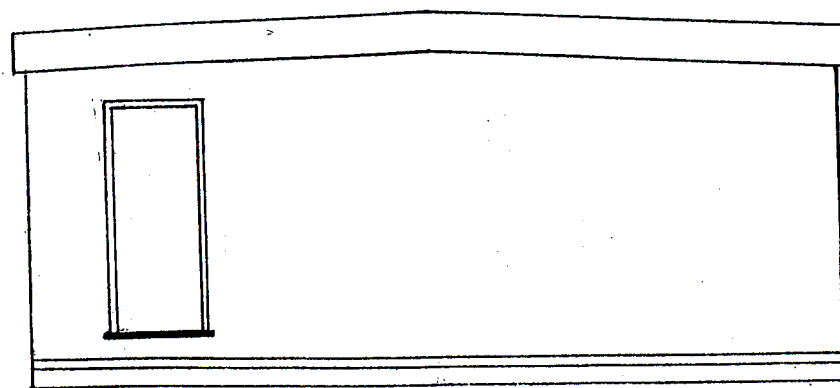
WOODFORD HALSE CHURCH OF ENGLAND SCHOOL AND YOUTH CENTRE	1:1250	SITE PLAN	
	OCT 05	D0212A	
	AD	3086	



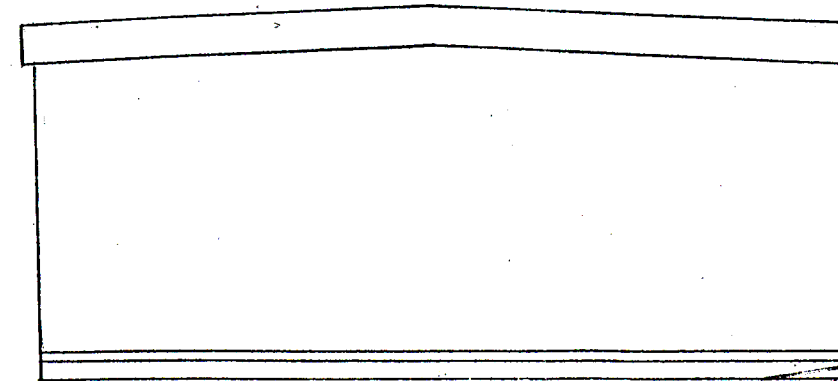
ELEVATION A



ELEVATION C



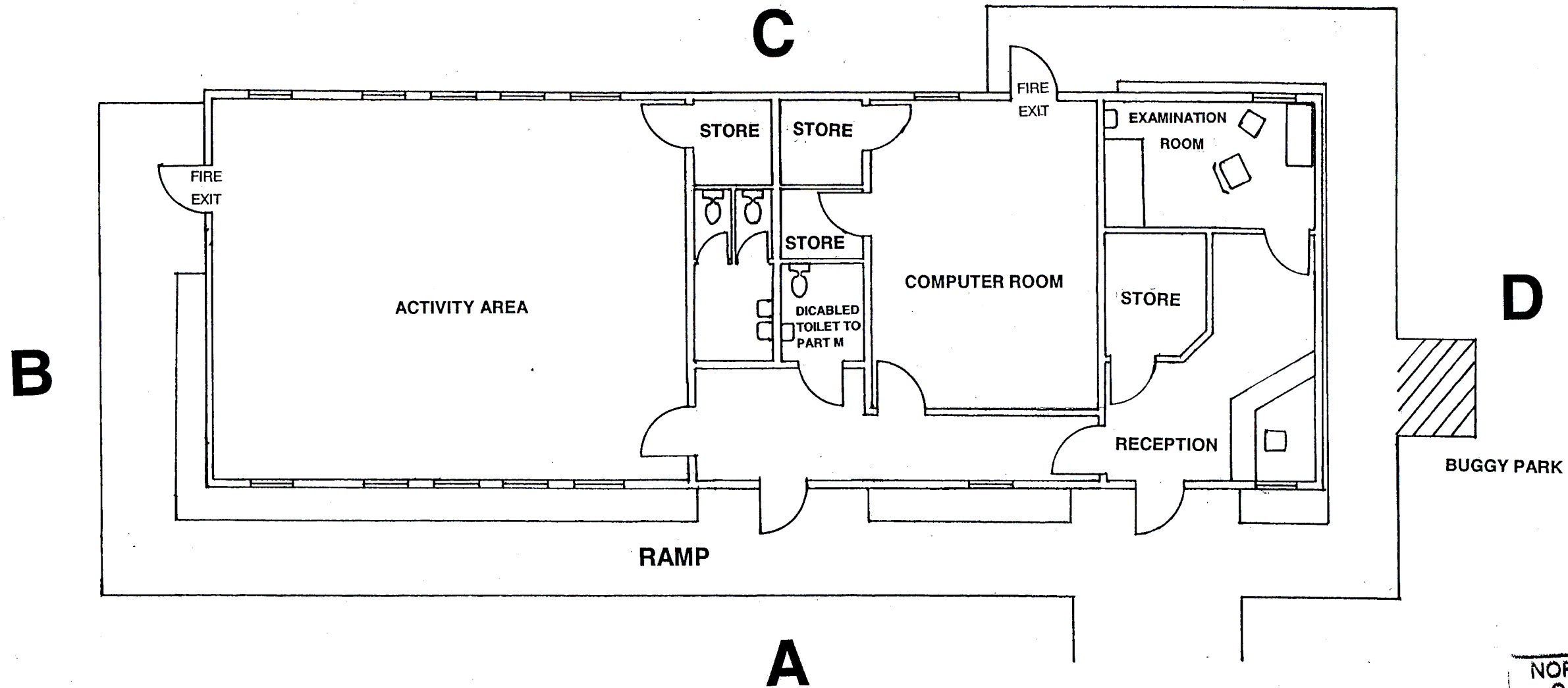
ELEVATION B



ELEVATION D

WILTSHIRE
HAMPTONSHIRE
COUNTY COUNCIL
-6 OCT 2006
GROWTH MANAGEMENT

PROPOSED MOBILE CLASSROOM FOR WOODFORD HALSE PRIMARY SCHOOL HIGH STREET, WOODFORD HALSE.	ELEVATIONS	SCALE:	AUGUST
	PLAN	1:75	2006



NORTHAMPTONSHIRE
 COUNTY COUNCIL
 - 6 OCT 2006
 GROWTH MANAGEMENT

PROPOSED MOBILE UNIT FOR WOODFORD HALSE PRIMARY SCHOOL HIGH STREET, WOODFORD HALSE.	FLOOR PLAN	SCALE: 1:100	AUGUST 2006
---	---------------	-----------------	----------------