



## Local Analysis of Alcohol Related Admission Rates in Northamptonshire

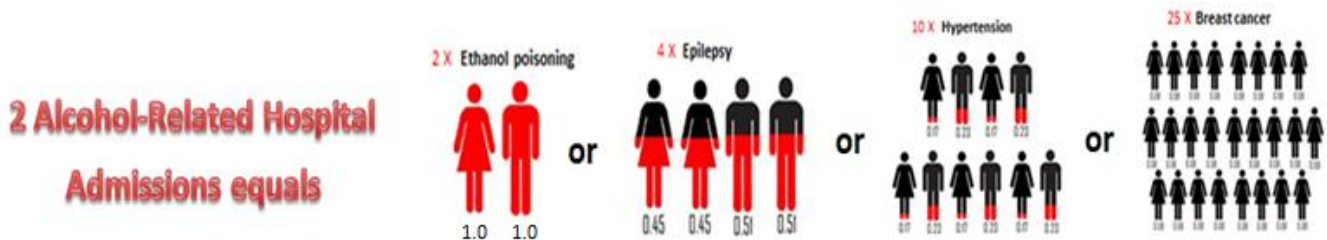
### Contents

Background .....	2
Limitations.....	3
Summary of Findings.....	3
Comments .....	4
Overarching Admission Rates - Northamptonshire .....	5
District Level Rates – Broad Measure .....	7
District Level Rates – Narrow Measure.....	10
Age Specific Rates by Gender, Broad Measure – Northamptonshire.....	13
Age Specific Rates by Gender, Broad Measure – Corby .....	15
Age Specific Rates by Gender, Broad Measure – Daventry .....	17
Age Specific Rates by Gender, Broad Measure – East Northamptonshire .....	19
Age Specific Rates by Gender, Broad Measure – Kettering.....	21
Age Specific Rates by Gender, Broad Measure – Northampton.....	23
Age Specific Rates by Gender, Broad Measure – South Northamptonshire .....	25
Age Specific Rates by Gender, Broad Measure – Wellingborough.....	27
Age Specific Rates by Gender, Narrow Measure – Northamptonshire .....	29
Age Specific Rates by Gender, Narrow Measure – Corby.....	31
Age Specific Rates by Gender, Narrow Measure – Daventry.....	33
Age Specific Rates by Gender, Narrow Measure – East Northamptonshire.....	35
Age Specific Rates by Gender, Narrow Measure – Kettering .....	37
Age Specific Rates by Gender, Narrow Measure – Northampton .....	39
Age Specific Rates by Gender, Narrow Measure – South Northamptonshire.....	41
Age Specific Rates by Gender, Narrow Measure – Wellingborough .....	43

## Background

Provisional national indicators provided by [Local Alcohol Profiles for England](#) (LAPE) suggest there has been a sharp increase in alcohol related hospital admissions in Northamptonshire between 2013/14 and 2014/15. The aim of this paper is to use local Secondary Uses Service (SUS) data from the Arden and Greater East Midlands Commissioning Support Unit to explore this increase in greater detail and determine whether it is statistically significant.

In order to conduct this analysis, the methodology used for calculating the national indicators has been replicated as closely as possible based on publicly available materials. Alcohol Attributable Fractions (AAFs) as per the 2014 report "[Updating England-Specific Alcohol-Attributable Fractions](#)" were used to estimate the likelihood of hospital admissions being linked to alcohol based on diagnoses, patient age and gender. Totalling the appropriate probabilities across all admissions provided estimates of the numbers of hospital admissions that were related to alcohol. For example:



There are two types of indicator based on AAFs that have been replicated here:

- A broad measure that considers all diagnosis codes for each admission; and
- A narrow measure that considers only the primary diagnosis and external cause codes (e.g. assault).

The broad measure provides an overall estimate of the wider impact of alcohol on health services, while the narrow measure was introduced by Public Health England as an indicator that is less sensitive to coding practices and more responsive to changes brought about by local initiatives.

Both measures are expressed as rates of admission episodes per 100,000 population, which allows comparisons to be made across different geographies and timeframes. The local estimated numbers admissions have been converted to rates based on population estimates from the [Office for National Statistics](#). All non-age specific rates have been directly standardised to the [2013 European Standard Population](#). The age groups used for the age-specific rates mirror the age brackets used in the published table of AAFs.

95% confidence intervals have been calculated around the rates to illustrate margins of error. Further statistical tests (pooled z tests) have been undertaken to determine whether differences between 2013/14 and 2014/15 rates were significant.

## Limitations

- The national indicators are based on Hospital Episode Statistics, which are derived from SUS data but have gone through additional layers of data quality checking and cleansing. There may also be subtle differences between the methodologies applied nationally and locally to produce the alcohol related admissions figures. The local results are therefore not directly comparable with the national indicators. The figures calculated locally were, however, similar enough to the national indicators (where available) for the results to be considered suitable proxies.
- The SUS dataset used for this analysis does not contain any unique patient reference numbers. Therefore, repeat admissions cannot be identified and all figures relate to admission episodes rather than individual patients.
- Also, the SUS dataset used does not include ethnicity as a field, so it has not been possible to consider this as part of the local analysis.
- Only 2013/14 and 2014/15 data extracts were available for analysis, so it is not possible to determine any long term trends.
- Public Health & Wellbeing are due to receive a 10 year extract of Hospital Episode Statistics, which will allow more detailed analysis and exploration of trends. This analysis will be updated when the extract has been received and processed.

## Summary of Findings

- Local calculations found that both the broad and narrow measures of alcohol related admission episodes for Northamptonshire increased significantly between 2013/14 and 2014/15. Admission rates for males had a greater level of increase than those for females; the narrow measure of admissions for females did not change significantly between the two periods.
- The overarching broad rates of admission episodes (persons) increased significantly between 2013/14 and 2014/15 in all districts except Corby and East Northamptonshire. Northampton was the only district where the female broad rate increased significantly. The male broad rates increased significantly in Daventry, Kettering and Northampton.
- The overarching narrow rates of admission episodes (persons) increased significantly in Corby, Northampton and Wellingborough. Corby was the only district where the narrow rate for females increased significantly. Significant increases were found in the male rates for Kettering, Northampton, South Northamptonshire and Wellingborough.
- Corby has the highest rates of admissions in the county according to both the broad and narrow measures. The fact that the narrow rate for Corby increased significantly while the broad rate did not suggests that there has been a shift towards alcohol related conditions being the primary diagnosis rather than a broader contributor to the admission. Further data would be required to explore this in more detail.
- The broad rate of admissions increased with age. For females, age-specific rates tended to peak in the 55-64 age bracket, whereas for males they continued to increase and peaked in the age 75+ bracket.
- The age-specific narrow rates of admissions for Northamptonshire followed a similar pattern to the broad rates, with males aged 75+ having the highest rates. Admissions for Northamptonshire females peaked in the 45-54 age bracket for the narrow rate. Peak ages varied at a district level, likely due to the lower numbers involved, but overall the rates of admissions were highest at ages 45+.
- While the majority of significant increases were observed amongst the age-specific rates related to ages 55 and over, both the broad and narrow rates for Northamptonshire females aged 16-24 increased significantly.

## **Comments**

The increase in admission rates between 2013/14 and 2014/15 shows up as a spike in the LAPE indicator trends. Local analysis has confirmed that the provisional 2014/15 indicators published by LAPE are indicative of a significant increase in local alcohol related hospital admissions compared to 2013/14. 2015/16 data, when available, will put this report's findings in more context and help determine whether this is a one-off or part of an ongoing trend.

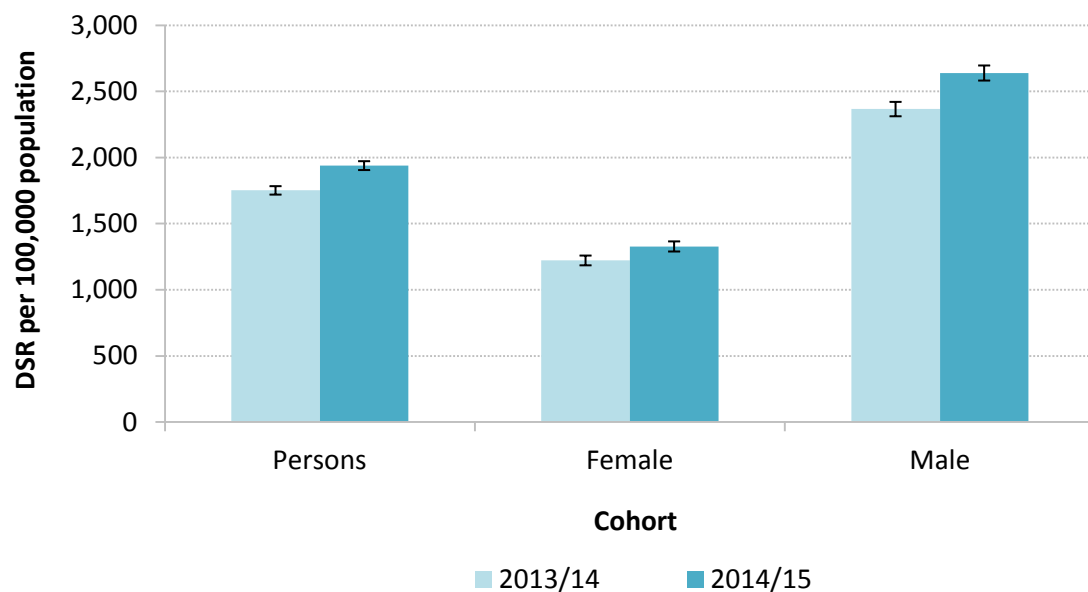
Given that the majority of alcohol related illnesses take time to develop, the increase in admissions seen now will have resulted from historic as well as recent usage. As the majority of age-specific increases in rates were seen amongst older age brackets, it is possible that the rise in admissions may be partly due to more patients with chronic conditions requiring multiple episodes in hospital. It is not possible to explore readmissions with the data available but this analysis should be considered in future if a suitable dataset becomes available.

**Annette Hollesen**  
**Performance Analyst**  
**April 2016**

## Overarching Admission Rates - Northamptonshire

Cohort	2013/14 – Broad Measure				2014/15 – Broad Measure				Significant Change
	Estimated Events	DSR per 100,000 population	95% Lower Confidence Limit	95% Upper Confidence Limit	Estimated Events	DSR per 100,000 population	95% Lower Confidence Limit	95% Upper Confidence Limit	
Persons	11,495.4	1,751.7	1,719.7	1,783.7	12,901.4	1,939.0	1,905.5	1,972.5	↑
Female	4,225.3	1,222.0	1,185.2	1,258.9	4,639.2	1,327.7	1,289.5	1,365.9	↑
Male	7,270.1	1,327.7	1,289.5	1,365.9	8,262.1	2,639.2	2,582.2	2,696.1	↑

### Northamptonshire Alcohol Related Admission Episodes (BROAD)



Cohort	2013/14 – Narrow Measure				2014/15 – Narrow Measure				Significant Change
	Estimated Events	DSR per 100,000 population	95% Lower Confidence Limit	95% Upper Confidence Limit	Estimated Events	DSR per 100,000 population	95% Lower Confidence Limit	95% Upper Confidence Limit	
Persons	3,930.7	582.4	564.2	600.6	4,425.9	651.5	632.3	670.7	↑
Female	1,627.9	466.2	443.6	488.9	1,718.8	489.8	466.7	513.0	-
Male	2,302.8	712.9	683.8	742.0	2,707.0	831.1	799.7	862.4	↑

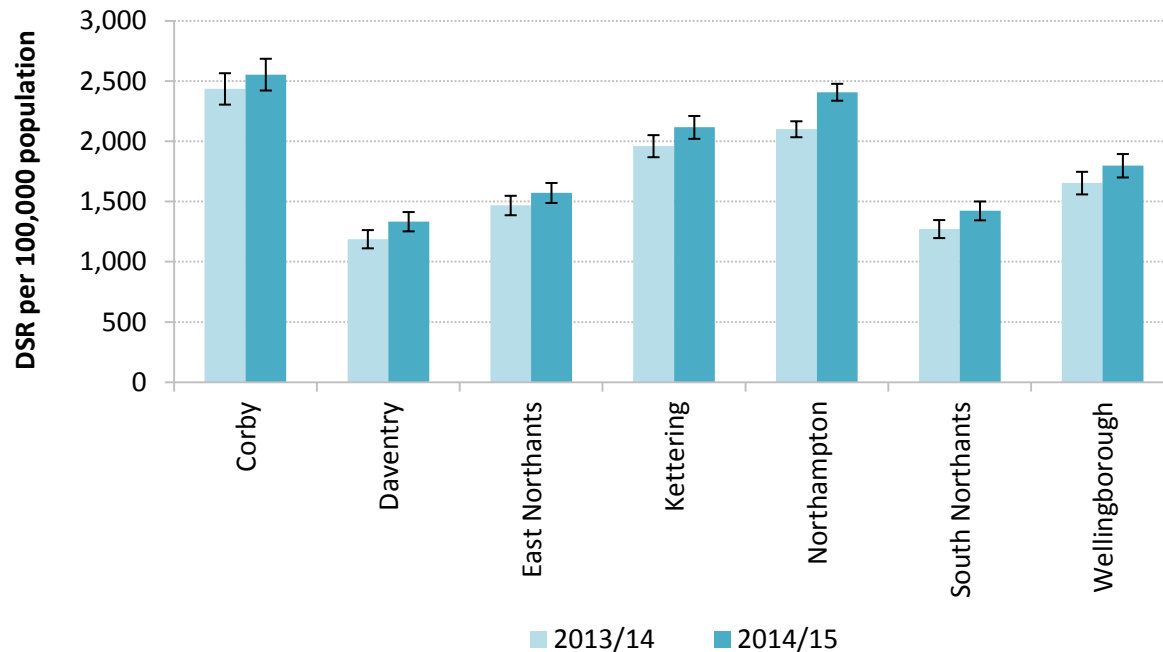
Northamptonshire Alcohol Related Admission Episodes (NARROW)



## District Level Rates – Broad Measure

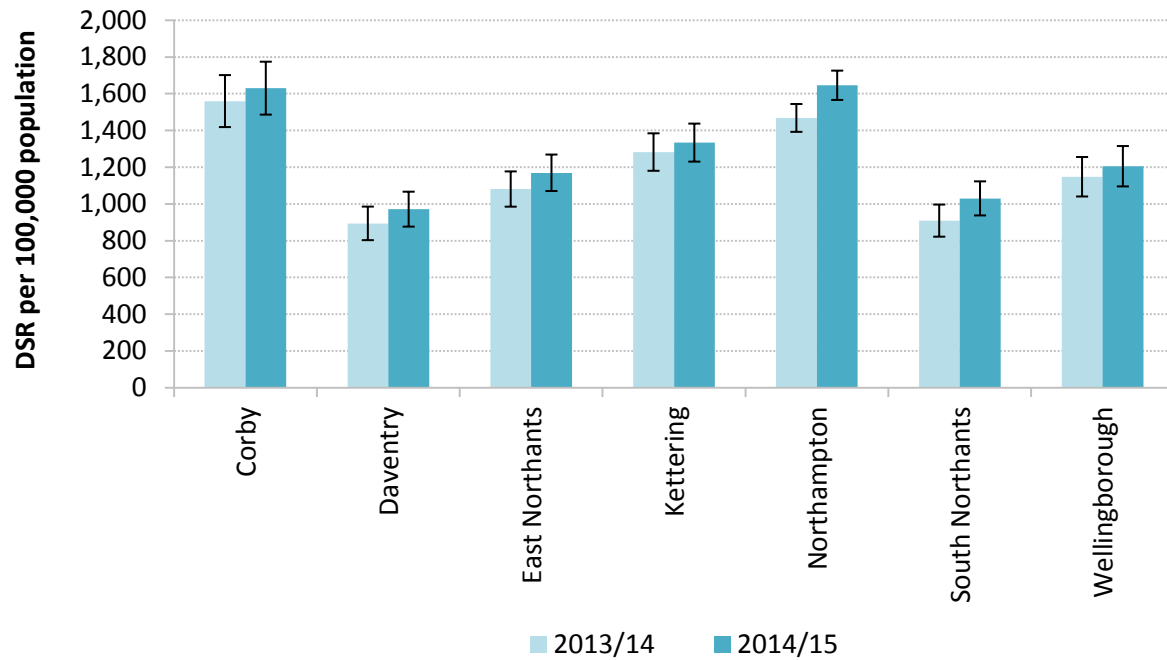
District	2013/14 – Persons				2014/15 – Persons				Significant Change
	Estimated Events	DSR per 100,000 population	95% Lower Confidence Limit	95% Upper Confidence Limit	Estimated Events	DSR per 100,000 population	95% Lower Confidence Limit	95% Upper Confidence Limit	
Corby	1,342.7	2,435.4	2,305.1	2,565.6	1,444.3	2,554.0	2,422.3	2,685.7	-
Daventry	944.2	1,187.9	1,112.2	1,263.7	1,064.6	1,333.3	1,253.2	1,413.3	↑
East Northants	1,271.6	1,467.6	1,386.9	1,548.3	1,376.6	1,571.8	1,488.7	1,654.8	-
Kettering	1,759.2	1,960.2	1,868.6	2,051.8	1,918.0	2,116.1	2,021.4	2,210.8	↑
Northampton	3,869.5	2,100.5	2,034.3	2,166.6	4,516.0	2,407.6	2,337.4	2,477.8	↑
South Northants	1,111.9	1,272.0	1,197.3	1,346.8	1,268.8	1,422.9	1,344.6	1,501.2	↑
Wellingborough	1,196.1	1,653.7	1,559.9	1,747.4	1,312.0	1,797.6	1,700.4	1,894.9	↑

### Alcohol Related Admission Episodes (BROAD) - Persons



District	2013/14 – Female				2014/15 – Female				Significant Change
	Estimated Events	DSR per 100,000 population	95% Lower Confidence Limit	95% Upper Confidence Limit	Estimated Events	DSR per 100,000 population	95% Lower Confidence Limit	95% Upper Confidence Limit	
Corby	466.7	1,559.6	1,418.1	1,701.1	491.9	1,629.9	1,485.9	1,774.0	-
Daventry	368.5	894.2	802.9	985.5	401.2	971.6	876.5	1,066.7	-
East Northants	487.5	1,081.0	985.0	1,176.9	533.8	1,169.5	1,070.2	1,268.7	-
Kettering	607.3	1,282.2	1,180.2	1,384.1	639.2	1,333.6	1,230.2	1,437.0	-
Northampton	1,440.8	1,468.0	1,392.2	1,543.8	1,635.8	1,645.6	1,565.8	1,725.3	↑
South Northants	415.5	909.1	821.7	996.6	474.2	1,030.1	937.4	1,122.8	-
Wellingborough	439.1	1,147.9	1,040.5	1,255.2	463.2	1,205.2	1,095.4	1,314.9	-

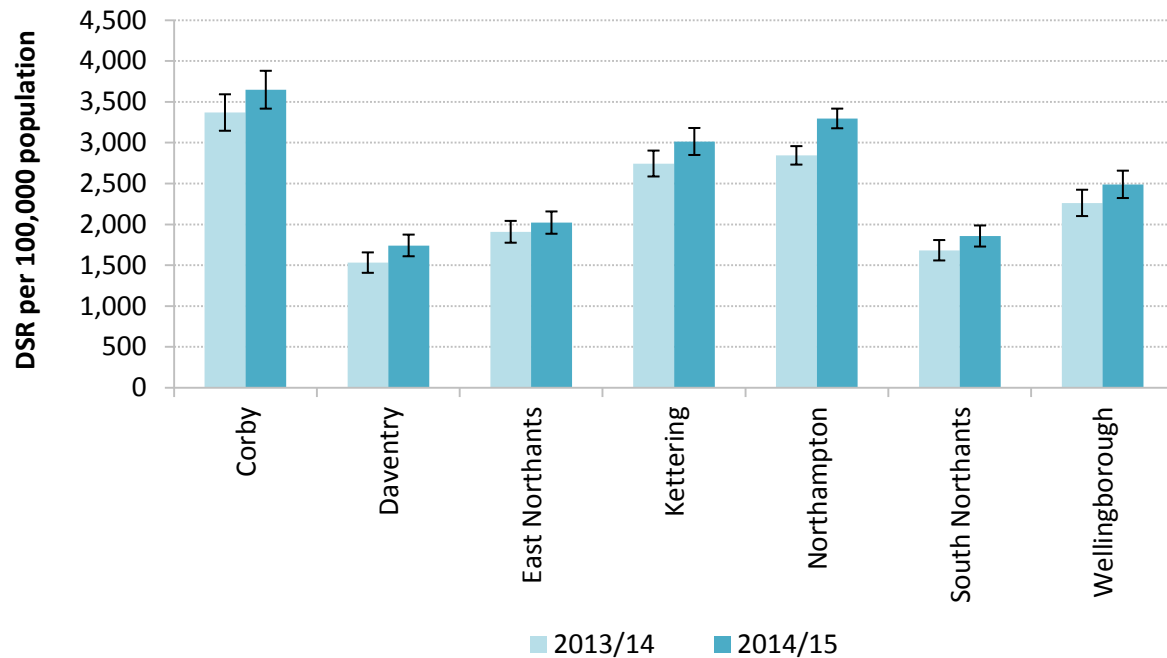
Alcohol Related Admission Episodes (BROAD) - Female





District	2013/14 – Male				2014/15 – Male				Significant Change
	Estimated Events	DSR per 100,000 population	95% Lower Confidence Limit	95% Upper Confidence Limit	Estimated Events	DSR per 100,000 population	95% Lower Confidence Limit	95% Upper Confidence Limit	
Corby	876.0	3,369.0	3,145.9	3,592.1	952.4	3,648.3	3,416.6	3,880.0	-
Daventry	575.8	1,531.4	1,406.3	1,656.5	663.5	1,741.7	1,609.2	1,874.3	↑
East Northants	784.1	1,908.5	1,774.9	2,042.1	842.8	2,021.4	1,884.9	2,157.9	-
Kettering	1,151.9	2,744.7	2,586.2	2,903.2	1,278.8	3,014.5	2,849.3	3,179.8	↑
Northampton	2,428.7	2,844.6	2,731.4	2,957.7	2,880.2	3,296.6	3,176.2	3,416.9	↑
South Northants	696.5	1,682.9	1,557.9	1,807.8	794.6	1,857.3	1,728.1	1,986.4	-
Wellingborough	757.0	2,262.4	2,101.2	2,423.6	848.8	2,489.6	2,322.1	2,657.1	-

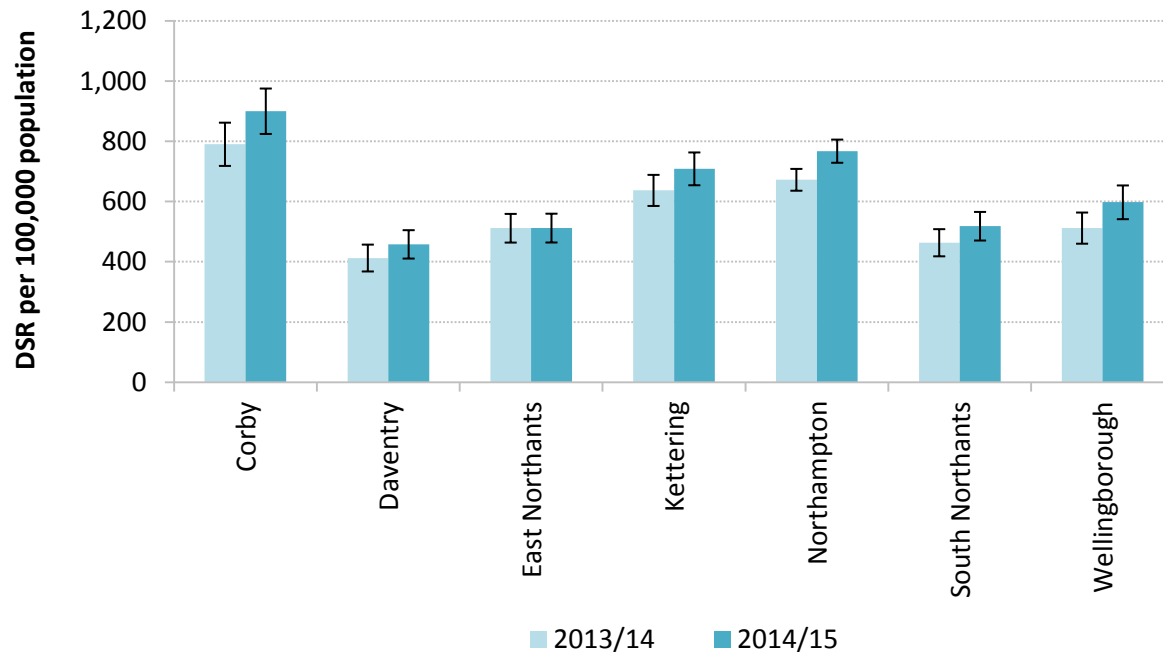
**Alcohol Related Admission Episodes (BROAD) - Male**



## District Level Rates – Narrow Measure

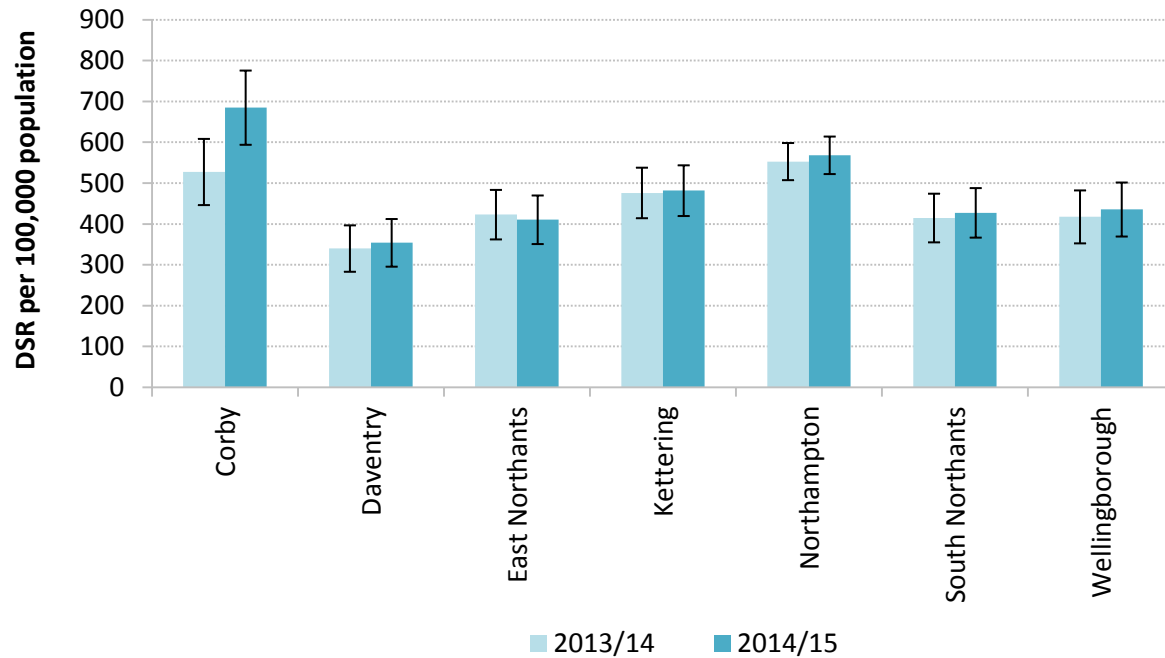
District	2013/14 – Persons				2014/15 – Persons				Significant Change
	Estimated Events	DSR per 100,000 population	95% Lower Confidence Limit	95% Upper Confidence Limit	Estimated Events	DSR per 100,000 population	95% Lower Confidence Limit	95% Upper Confidence Limit	
Corby	466.0	790.3	718.6	862.1	547.3	900.0	824.6	975.4	↑
Daventry	329.2	412.7	368.1	457.3	363.3	458.1	411.0	505.2	-
East Northants	443.1	511.6	464.0	559.2	440.5	512.1	464.3	559.9	-
Kettering	585.5	637.2	585.6	688.8	650.1	708.8	654.3	763.3	-
Northampton	1,324.3	672.4	636.2	708.6	1,529.3	767.4	729.0	805.9	↑
South Northants	406.2	463.5	418.4	508.6	457.9	518.3	470.8	565.8	-
Wellingborough	376.4	512.0	460.3	563.7	437.2	597.7	541.6	653.7	↑

### Alcohol Related Admission Episodes (NARROW) - Persons



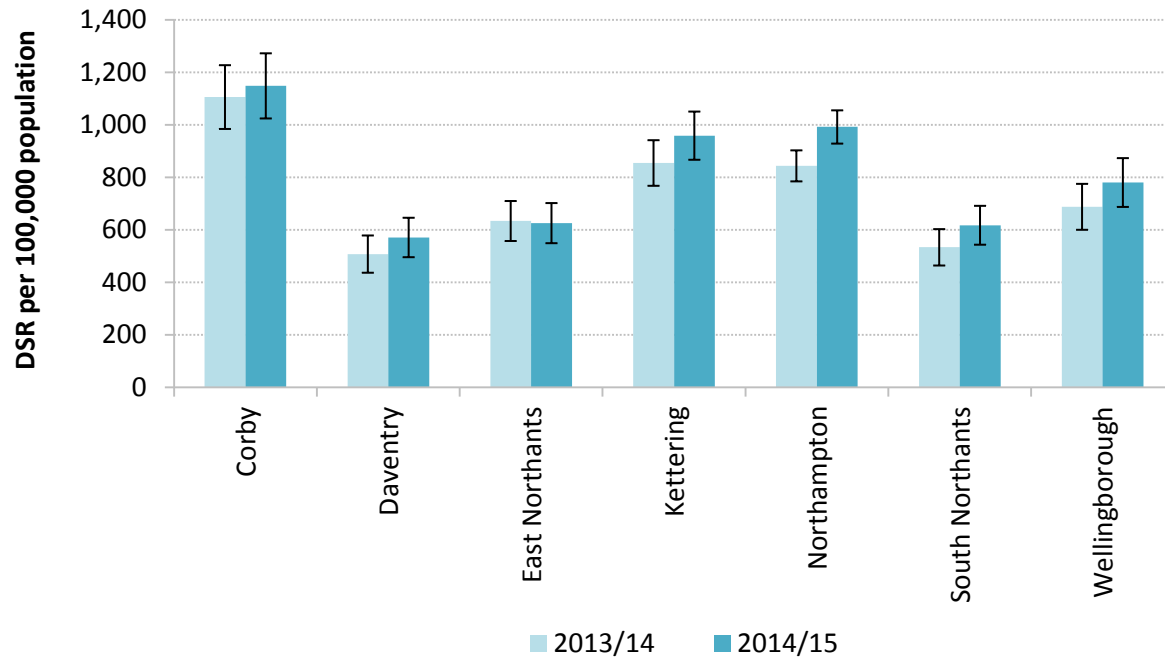
District	2013/14 – Female				2014/15 – Female				Significant Change
	Estimated Events	DSR per 100,000 population	95% Lower Confidence Limit	95% Upper Confidence Limit	Estimated Events	DSR per 100,000 population	95% Lower Confidence Limit	95% Upper Confidence Limit	
Corby	162.7	527.3	446.3	608.4	218.1	684.8	593.9	775.7	↑
Daventry	137.4	339.9	283.1	396.7	141.3	353.9	295.5	412.2	-
East Northants	187.1	422.9	362.3	483.5	182.8	410.4	350.9	469.9	-
Kettering	227.7	476.0	414.2	537.9	231.3	481.6	419.6	543.7	-
Northampton	567.6	552.9	507.4	598.3	588.2	568.2	522.3	614.1	-
South Northants	186.1	414.7	355.1	474.3	190.7	427.3	366.6	487.9	-
Wellingborough	159.3	417.4	352.6	482.3	166.5	435.5	369.3	501.6	-

Alcohol Related Admission Episodes (NARROW) - Female



District	2013/14 – Male				2014/15 – Male				Significant Change
	Estimated Events	DSR per 100,000 population	95% Lower Confidence Limit	95% Upper Confidence Limit	Estimated Events	DSR per 100,000 population	95% Lower Confidence Limit	95% Upper Confidence Limit	
Corby	303.3	1,046.8	928.9	1,164.6	329.3	1,148.4	1,024.4	1,272.4	-
Daventry	191.8	493.8	424.0	563.7	222.1	571.0	495.9	646.1	-
East Northants	256.0	609.7	535.0	684.4	257.7	625.6	549.2	702.0	-
Kettering	357.8	820.7	735.7	905.8	418.8	958.7	866.9	1,050.6	↑
Northampton	756.7	809.4	751.7	867.0	941.1	991.8	928.5	1,055.2	↑
South Northants	220.1	516.0	447.8	584.1	267.3	617.4	543.4	691.4	↑
Wellingborough	217.1	625.5	542.3	708.7	270.7	780.3	687.3	873.2	↑

Alcohol Related Admission Episodes (NARROW) - Male

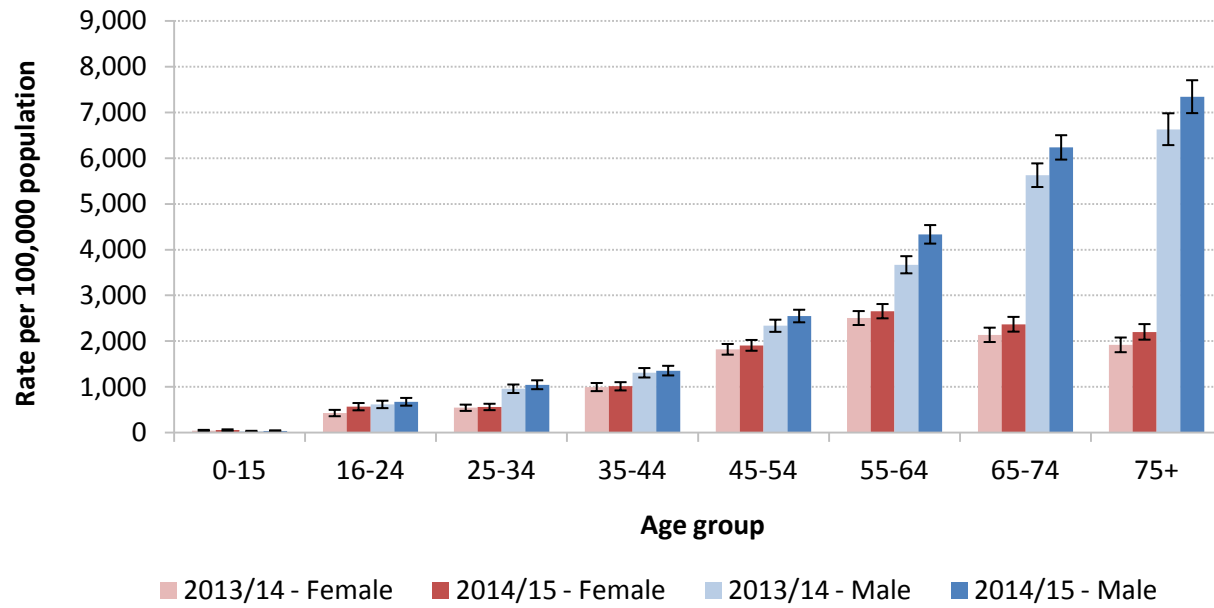


## Age Specific Rates by Gender, Broad Measure – Northamptonshire

Age Group	2013/14 – Female				2014/15 – Female				Significant Change
	Estimated Events	Rate per 100,000 population	95% Lower Confidence Limit	95% Upper Confidence Limit	Estimated Events	Rate per 100,000 population	95% Lower Confidence Limit	95% Upper Confidence Limit	
0-15	31.9	45.6	30.8	63.9	39.5	56.0	39.4	75.7	-
16-24	152.2	428.0	362.3	501.3	201.5	567.1	491.4	650.9	↑
25-34	248.5	545.2	478.5	616.3	259.0	561.9	495.5	634.6	-
35-44	493.7	996.7	910.7	1,088.7	495.0	1,013.5	926.1	1,106.8	-
45-54	952.3	1,821.6	1,707.7	1,941.0	1,019.1	1,908.4	1,793.0	2,029.3	-
55-64	1,058.8	2,504.9	2,356.2	2,660.4	1,125.1	2,654.5	2,501.7	2,814.3	-
65-74	728.1	2,136.7	1,984.3	2,297.7	844.2	2,368.1	2,211.0	2,533.4	↑
75+	559.9	1,916.8	1,761.3	2,082.4	655.8	2,200.9	2,035.7	2,376.0	↑

Age Group	2013/14 – Male				2014/15 – Male				Significant Change
	Estimated Events	Rate per 100,000 population	95% Lower Confidence Limit	95% Upper Confidence Limit	Estimated Events	Rate per 100,000 population	95% Lower Confidence Limit	95% Upper Confidence Limit	
0-15	20.9	29.0	17.5	43.7	27.5	37.7	24.4	53.9	-
16-24	231.7	617.3	539.9	701.5	252.8	675.0	593.5	762.6	-
25-34	420.9	959.4	869.9	1,055.5	460.1	1,047.4	953.8	1,147.6	-
35-44	633.8	1,309.1	1,209.1	1,415.1	650.0	1,355.9	1,253.6	1,464.2	-
45-54	1,206.5	2,336.3	2,206.3	2,471.9	1,344.9	2,549.5	2,415.0	2,689.4	↑
55-64	1,496.2	3,669.0	3,485.4	3,859.8	1,780.7	4,333.6	4,134.6	4,539.7	↑
65-74	1,844.4	5,625.4	5,371.5	5,888.1	2,123.8	6,232.9	5,970.6	6,503.8	↑
75+	1,415.7	6,628.4	6,287.6	6,982.9	1,622.5	7,339.2	6,986.3	7,705.2	↑

### Alcohol Related Admission Episodes (BROAD) - Northamptonshire

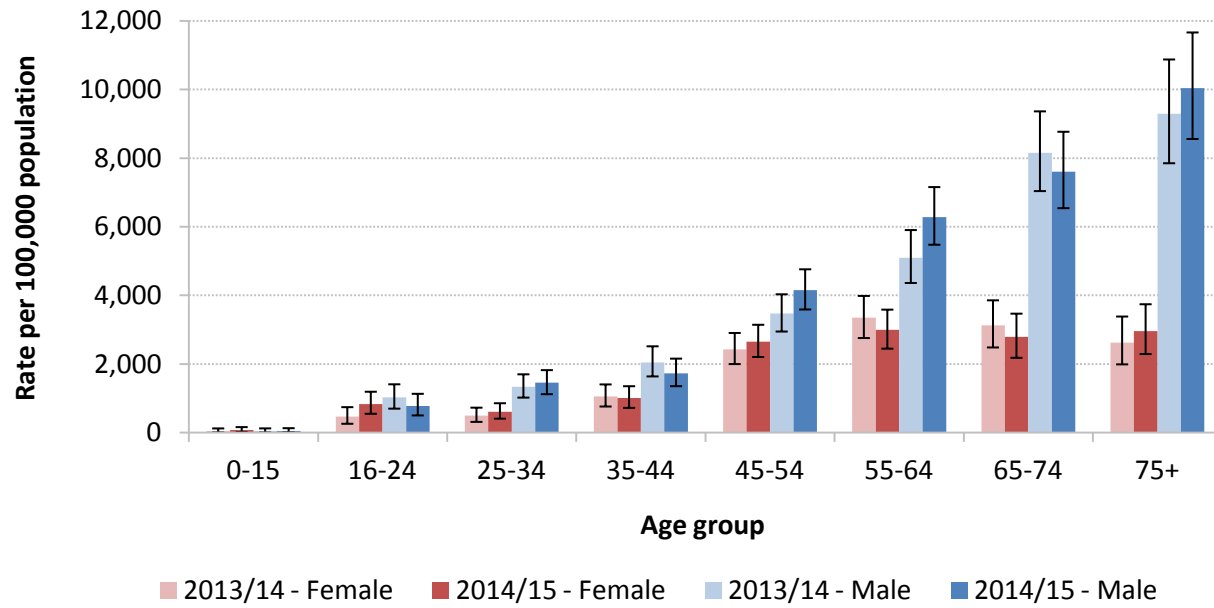


## Age Specific Rates by Gender, Broad Measure – Corby

Age Group	2013/14 – Female				2014/15 – Female				Significant Change
	Estimated Events	Rate per 100,000 population	95% Lower Confidence Limit	95% Upper Confidence Limit	Estimated Events	Rate per 100,000 population	95% Lower Confidence Limit	95% Upper Confidence Limit	
0-15	3.1	45.3	9.0	128.0	5.2	74.3	23.2	166.6	-
16-24	16.4	472.9	263.3	747.9	28.5	831.2	554.3	1,197.0	-
25-34	24.7	498.0	318.5	732.9	31.1	610.0	412.6	861.9	-
35-44	44.6	1,054.6	765.9	1,410.0	42.8	1,013.7	726.8	1,358.0	-
45-54	115.5	2,424.6	2,002.5	2,909.0	128.2	2,650.5	2,208.6	3,147.7	-
55-64	119.5	3,347.3	2,761.4	3,988.8	111.5	2,994.1	2,452.0	3,589.5	-
65-74	84.3	3,128.8	2,487.1	3,860.3	76.4	2,789.8	2,185.4	3,471.7	-
75+	58.6	2,627.4	1,994.5	3,387.5	68.1	2,961.3	2,294.9	3,746.5	-

Age Group	2013/14 – Male				2014/15 – Male				Significant Change
	Estimated Events	Rate per 100,000 population	95% Lower Confidence Limit	95% Upper Confidence Limit	Estimated Events	Rate per 100,000 population	95% Lower Confidence Limit	95% Upper Confidence Limit	
0-15	3.2	46.4	9.1	129.2	3.8	54.0	12.0	135.0	-
16-24	35.0	1,028.5	704.1	1,413.3	26.1	779.0	506.5	1,136.2	-
25-34	63.5	1,333.5	1,025.8	1,704.4	70.0	1,454.2	1,125.1	1,826.7	-
35-44	88.7	2,050.2	1,642.6	2,520.1	75.7	1,730.1	1,358.5	2,161.6	-
45-54	163.3	3,469.4	2,951.1	4,036.4	200.8	4,155.6	3,594.2	4,764.3	-
55-64	174.7	5,099.2	4,365.7	5,907.7	222.6	6,281.6	5,480.3	7,159.6	↑
65-74	196.3	8,157.0	7,042.8	9,366.2	186.1	7,602.9	6,545.3	8,771.9	-
75+	151.4	9,296.7	7,854.8	10,878.2	167.3	10,041.4	8,561.3	11,664.9	-

### Alcohol Related Admission Episodes (BROAD) - Corby



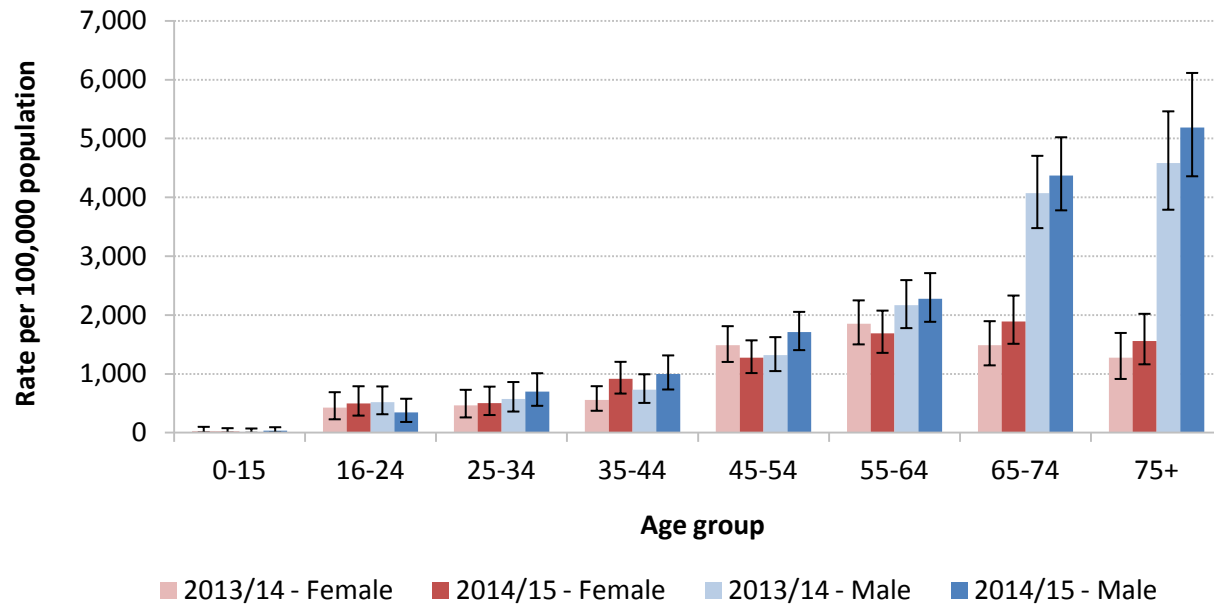


### Age Specific Rates by Gender, Broad Measure – Daventry

Age Group	2013/14 – Female				2014/15 – Female				Significant Change
	Estimated Events	Rate per 100,000 population	95% Lower Confidence Limit	95% Upper Confidence Limit	Estimated Events	Rate per 100,000 population	95% Lower Confidence Limit	95% Upper Confidence Limit	
0-15	2.0	28.0	3.4	101.3	1.1	15.6	0.4	79.0	-
16-24	14.8	424.6	229.7	690.4	17.5	498.4	292.4	791.4	-
25-34	17.0	466.6	261.7	731.0	19.1	503.7	302.5	784.5	-
35-44	30.1	556.0	374.5	792.4	47.4	915.4	666.7	1,206.6	↑
45-54	97.0	1,486.4	1,204.8	1,812.4	85.1	1,273.3	1,015.5	1,572.0	-
55-64	99.1	1,851.0	1,502.8	2,251.2	90.1	1,690.6	1,358.6	2,076.7	-
65-74	64.5	1,487.9	1,146.6	1,897.3	86.6	1,891.8	1,513.0	2,333.1	-
75+	43.9	1,274.2	915.4	1,697.5	54.3	1,558.6	1,164.4	2,022.3	-

Age Group	2013/14 – Male				2014/15 – Male				Significant Change
	Estimated Events	Rate per 100,000 population	95% Lower Confidence Limit	95% Upper Confidence Limit	Estimated Events	Rate per 100,000 population	95% Lower Confidence Limit	95% Upper Confidence Limit	
0-15	1.1	14.5	0.3	73.6	2.5	32.3	3.2	95.3	-
16-24	20.7	517.5	315.5	788.2	13.7	346.6	184.5	578.8	-
25-34	22.5	573.1	361.1	863.3	27.1	699.6	458.8	1,013.0	-
35-44	37.4	730.0	508.3	995.1	49.1	997.4	736.2	1,315.6	-
45-54	84.7	1,318.2	1,049.1	1,626.2	111.6	1,708.6	1,405.3	2,055.4	-
55-64	113.5	2,168.3	1,779.3	2,595.7	121.8	2,278.7	1,886.3	2,714.1	-
65-74	175.0	4,070.2	3,479.2	4,708.0	197.6	4,372.6	3,781.3	5,023.2	-
75+	120.9	4,585.4	3,791.6	5,464.2	140.0	5,184.0	4,360.3	6,116.5	-

### Alcohol Related Admission Episodes (BROAD) - Daventry

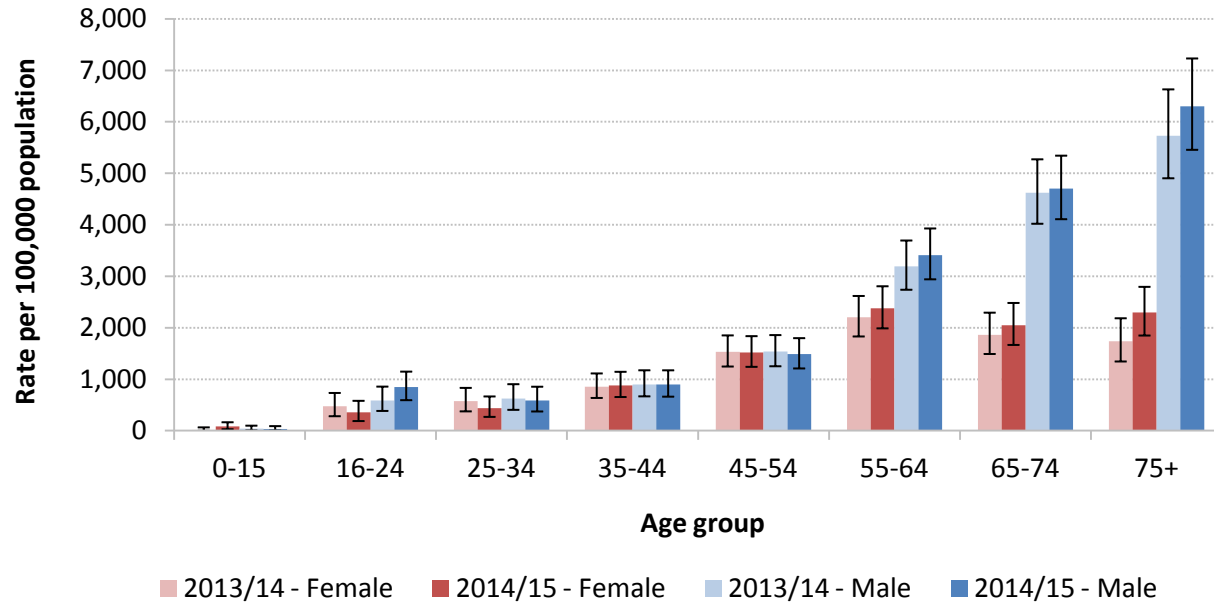


## Age Specific Rates by Gender, Broad Measure – East Northamptonshire

Age Group	2013/14 – Female				2014/15 – Female				Significant Change
	Estimated Events	Rate per 100,000 population	95% Lower Confidence Limit	95% Upper Confidence Limit	Estimated Events	Rate per 100,000 population	95% Lower Confidence Limit	95% Upper Confidence Limit	
0-15	1.4	16.2	0.3	67.0	6.7	80.9	30.3	166.1	-
16-24	19.1	473.0	283.4	735.2	14.4	358.1	189.8	582.6	-
25-34	27.0	573.9	377.6	833.7	21.1	438.3	270.3	667.5	-
35-44	53.0	852.3	638.3	1,114.6	53.4	881.8	656.2	1,145.9	-
45-54	103.6	1,530.6	1,248.5	1,853.3	105.1	1,520.3	1,242.3	1,838.7	-
55-64	126.1	2,200.6	1,832.4	2,619.0	135.8	2,377.4	1,990.3	2,807.9	-
65-74	87.6	1,864.3	1,492.1	2,295.0	102.1	2,046.7	1,668.0	2,483.4	-
75+	69.7	1,734.1	1,346.4	2,186.1	95.3	2,295.2	1,850.7	2,796.4	-

Age Group	2013/14 – Male				2014/15 – Male				Significant Change
	Estimated Events	Rate per 100,000 population	95% Lower Confidence Limit	95% Upper Confidence Limit	Estimated Events	Rate per 100,000 population	95% Lower Confidence Limit	95% Upper Confidence Limit	
0-15	3.4	38.8	7.1	100.0	2.7	30.8	4.7	91.2	-
16-24	26.6	589.5	385.8	858.4	38.8	845.8	595.5	1,149.9	-
25-34	26.8	626.6	407.0	905.7	25.2	584.2	375.4	856.3	-
35-44	52.2	900.0	669.5	1,175.5	50.8	896.8	663.4	1,174.9	-
45-54	104.4	1,540.9	1,253.9	1,859.4	103.5	1,491.1	1,211.4	1,800.0	-
55-64	178.2	3,194.4	2,740.0	3,696.5	190.1	3,411.5	2,942.3	3,930.8	-
65-74	216.9	4,623.9	4,021.7	5,273.8	230.7	4,702.5	4,110.5	5,344.5	-
75+	175.7	5,728.2	4,905.3	6,632.1	201.1	6,302.1	5,458.2	7,232.6	-

### Alcohol Related Admission Episodes (BROAD) - East Northamptonshire

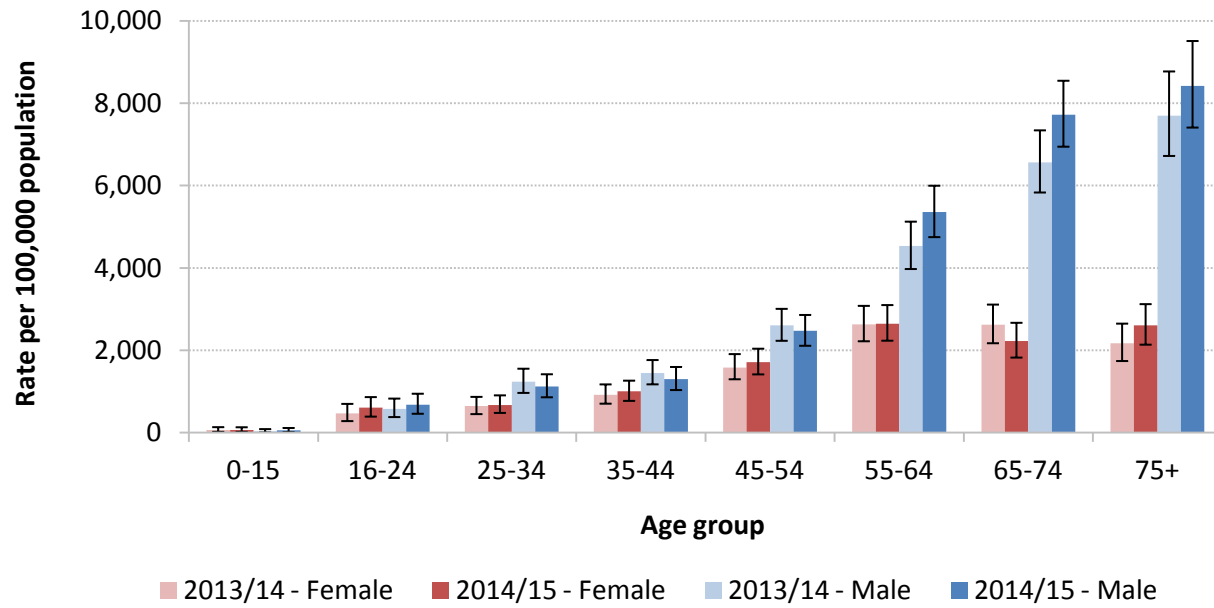


### Age Specific Rates by Gender, Broad Measure – Kettering

Age Group	2013/14 – Female				2014/15 – Female				Significant Change
	Estimated Events	Rate per 100,000 population	95% Lower Confidence Limit	95% Upper Confidence Limit	Estimated Events	Rate per 100,000 population	95% Lower Confidence Limit	95% Upper Confidence Limit	
0-15	6.1	64.0	23.1	136.9	6.2	64.0	22.7	134.7	-
16-24	21.3	466.3	284.3	702.1	27.4	605.9	392.9	867.4	-
25-34	39.5	646.0	453.9	872.6	41.7	674.2	483.0	909.5	-
35-44	63.6	921.2	707.3	1,175.3	68.3	1,003.4	775.5	1,266.1	-
45-54	108.5	1,584.3	1,299.8	1,911.2	121.2	1,712.4	1,418.3	2,042.4	-
55-64	150.4	2,632.8	2,223.0	3,082.1	149.6	2,645.2	2,236.1	3,101.9	-
65-74	125.4	2,621.4	2,174.9	3,113.1	111.7	2,222.7	1,826.2	2,671.0	-
75+	92.5	2,172.9	1,742.6	2,651.1	113.0	2,609.1	2,139.8	3,124.2	-

Age Group	2013/14 – Male				2014/15 – Male				Significant Change
	Estimated Events	Rate per 100,000 population	95% Lower Confidence Limit	95% Upper Confidence Limit	Estimated Events	Rate per 100,000 population	95% Lower Confidence Limit	95% Upper Confidence Limit	
0-15	3.1	31.4	6.4	90.2	5.3	53.2	16.3	117.1	-
16-24	28.3	581.2	382.0	830.8	32.7	678.3	462.3	948.6	-
25-34	72.7	1,240.7	968.7	1,556.6	66.0	1,124.1	862.4	1,421.4	-
35-44	98.1	1,451.8	1,176.9	1,766.7	87.2	1,299.1	1,038.0	1,598.6	-
45-54	180.0	2,607.3	2,233.8	3,009.8	174.4	2,472.6	2,113.5	2,861.3	-
55-64	246.4	4,532.1	3,976.8	5,126.7	291.5	5,356.7	4,751.4	5,999.4	↑
65-74	299.3	6,563.2	5,834.8	7,344.0	367.1	7,717.6	6,947.2	8,547.9	↑
75+	224.0	7,698.6	6,722.5	8,774.4	254.7	8,419.8	7,411.2	9,512.9	-

### Alcohol Related Admission Episodes (BROAD) - Kettering

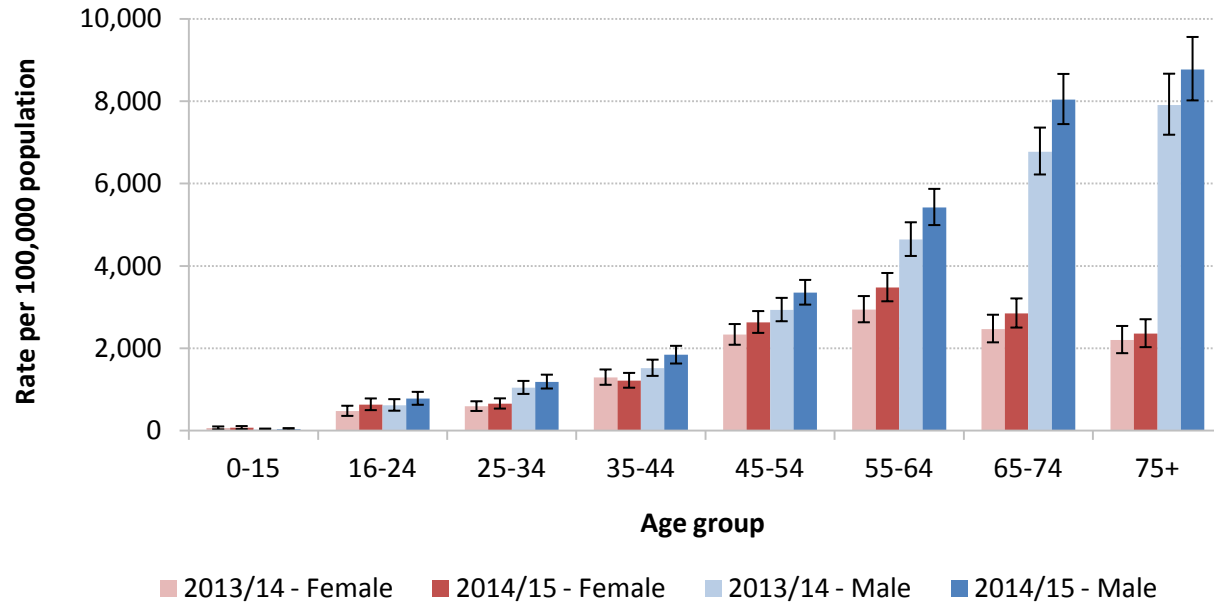


## Age Specific Rates by Gender, Broad Measure – Northampton

Age Group	2013/14 – Female				2014/15 – Female				Significant Change
	Estimated Events	Rate per 100,000 population	95% Lower Confidence Limit	95% Upper Confidence Limit	Estimated Events	Rate per 100,000 population	95% Lower Confidence Limit	95% Upper Confidence Limit	
0-15	14.5	65.3	34.6	106.1	16.2	71.8	40.6	115.2	-
16-24	60.5	473.5	361.8	608.9	81.1	632.9	502.3	786.1	-
25-34	101.9	593.6	481.7	717.9	112.8	656.9	539.9	788.3	-
35-44	192.8	1,295.4	1,116.9	1,489.3	183.1	1,217.1	1,046.7	1,406.2	-
45-54	339.9	2,333.5	2,089.5	2,592.5	389.3	2,632.5	2,377.5	2,907.5	-
55-64	337.7	2,942.9	2,635.5	3,272.0	403.4	3,476.0	3,145.1	3,832.4	↑
65-74	216.1	2,467.4	2,148.6	2,818.4	257.2	2,846.7	2,507.3	3,214.4	-
75+	177.4	2,202.2	1,885.4	2,545.7	192.7	2,354.9	2,031.8	2,709.3	-

Age Group	2013/14 – Male				2014/15 – Male				Significant Change
	Estimated Events	Rate per 100,000 population	95% Lower Confidence Limit	95% Upper Confidence Limit	Estimated Events	Rate per 100,000 population	95% Lower Confidence Limit	95% Upper Confidence Limit	
0-15	6.0	26.3	8.4	54.6	8.0	34.6	13.6	65.7	-
16-24	79.1	617.3	488.4	768.9	99.7	778.8	632.3	946.2	-
25-34	175.1	1,045.4	895.8	1,211.7	198.5	1,186.4	1,027.0	1,363.4	-
35-44	236.6	1,521.9	1,333.3	1,727.7	291.4	1,841.9	1,634.1	2,063.4	↑
45-54	421.8	2,933.9	2,660.5	3,227.7	492.0	3,354.1	3,064.2	3,664.0	↑
55-64	505.8	4,641.1	4,245.4	5,063.7	597.8	5,421.8	4,995.8	5,874.4	↑
65-74	556.5	6,775.6	6,224.3	7,362.7	683.3	8,039.1	7,447.5	8,665.1	↑
75+	447.9	7,904.4	7,189.2	8,671.4	509.8	8,767.8	8,023.1	9,563.0	-

### Alcohol Related Admission Episodes (BROAD) - Northampton



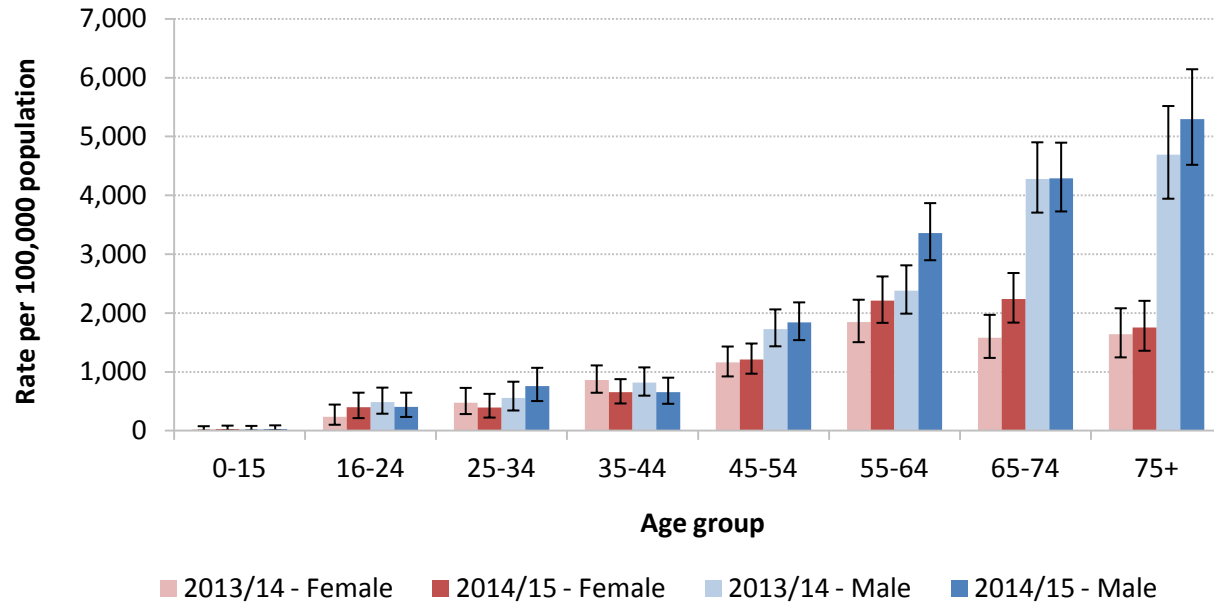


## Age Specific Rates by Gender, Broad Measure – South Northamptonshire

Age Group	2013/14 – Female				2014/15 – Female				Significant Change
	Estimated Events	Rate per 100,000 population	95% Lower Confidence Limit	95% Upper Confidence Limit	Estimated Events	Rate per 100,000 population	95% Lower Confidence Limit	95% Upper Confidence Limit	
0-15	1.8	22.0	1.3	78.4	2.3	27.5	3.0	88.3	-
16-24	8.8	237.6	102.7	446.0	14.8	396.4	215.6	648.1	-
25-34	19.7	475.4	284.9	729.3	16.6	392.9	225.0	628.4	-
35-44	56.2	859.3	646.7	1,111.8	41.3	652.8	464.6	878.3	-
45-54	84.7	1,160.7	924.2	1,432.6	90.2	1,209.3	970.8	1,483.9	-
55-64	105.7	1,844.5	1,506.7	2,227.9	126.0	2,211.4	1,834.7	2,624.2	-
65-74	75.7	1,577.7	1,239.0	1,971.4	113.3	2,237.1	1,838.7	2,682.3	↑
75+	62.9	1,637.0	1,248.3	2,082.8	69.8	1,755.7	1,360.7	2,209.2	-

Age Group	2013/14 – Male				2014/15 – Male				Significant Change
	Estimated Events	Rate per 100,000 population	95% Lower Confidence Limit	95% Upper Confidence Limit	Estimated Events	Rate per 100,000 population	95% Lower Confidence Limit	95% Upper Confidence Limit	
0-15	2.5	28.3	2.8	83.6	2.7	31.3	4.8	92.7	-
16-24	20.5	487.2	290.5	734.4	17.1	406.4	235.8	648.1	-
25-34	22.2	555.9	345.5	834.8	30.4	759.8	506.0	1,070.7	-
35-44	47.7	815.7	597.6	1,078.1	36.7	656.8	459.1	903.1	-
45-54	122.5	1,729.0	1,436.4	2,063.7	132.6	1,843.1	1,541.4	2,183.1	-
55-64	134.7	2,379.5	1,991.0	2,812.6	191.1	3,359.8	2,899.1	3,870.1	↑
65-74	204.1	4,277.9	3,708.4	4,903.5	214.2	4,287.4	3,728.7	4,897.4	-
75+	142.2	4,691.3	3,944.8	5,520.1	169.8	5,297.6	4,521.0	6,145.5	-

### Alcohol Related Admission Episodes (BROAD) - South Northamptonshire

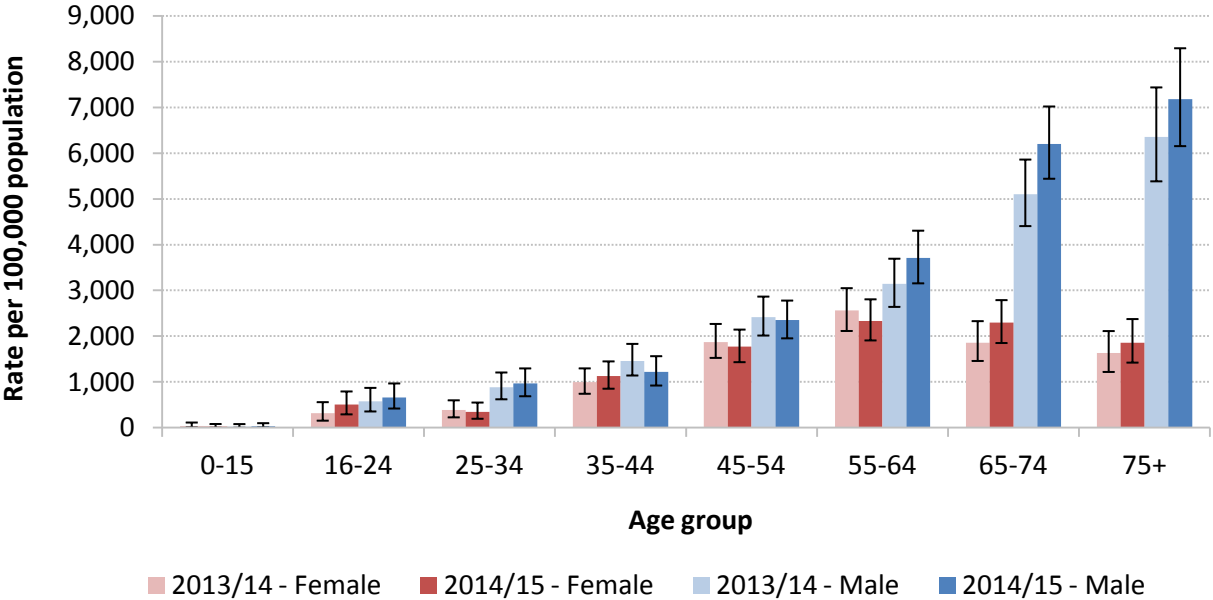


## Age Specific Rates by Gender, Broad Measure – Wellingborough

Age Group	2013/14 – Female				2014/15 – Female				Significant Change
	Estimated Events	Rate per 100,000 population	95% Lower Confidence Limit	95% Upper Confidence Limit	Estimated Events	Rate per 100,000 population	95% Lower Confidence Limit	95% Upper Confidence Limit	
0-15	3.1	40.1	8.1	115.1	1.8	23.3	1.4	83.2	-
16-24	11.2	319.8	156.4	560.4	17.8	508.4	293.6	794.6	-
25-34	18.7	385.6	228.6	600.9	16.7	346.7	197.5	551.7	-
35-44	53.3	998.7	743.6	1,298.5	58.7	1,127.6	854.5	1,451.3	-
45-54	103.0	1,871.9	1,527.7	2,270.0	100.0	1,772.2	1,434.4	2,146.4	-
55-64	120.4	2,560.6	2,115.9	3,051.7	108.7	2,331.8	1,909.7	2,808.1	-
65-74	74.5	1,859.1	1,460.4	2,331.2	96.9	2,296.1	1,852.9	2,790.4	-
75+	54.9	1,634.4	1,220.6	2,114.4	62.5	1,856.6	1,424.4	2,376.6	-

Age Group	2013/14 – Male				2014/15 – Male				Significant Change
	Estimated Events	Rate per 100,000 population	95% Lower Confidence Limit	95% Upper Confidence Limit	Estimated Events	Rate per 100,000 population	95% Lower Confidence Limit	95% Upper Confidence Limit	
0-15	1.8	22.9	1.4	81.8	2.6	32.2	5.2	101.1	-
16-24	21.6	576.5	357.4	872.8	24.8	661.5	421.2	969.2	-
25-34	38.2	884.6	623.2	1,208.8	42.0	969.0	689.4	1,298.1	-
35-44	73.0	1,458.5	1,143.3	1,833.9	59.1	1,216.2	923.8	1,565.3	-
45-54	129.7	2,418.3	2,016.0	2,867.1	130.0	2,350.0	1,955.1	2,780.6	-
55-64	142.9	3,144.4	2,642.3	3,695.2	165.8	3,706.8	3,157.0	4,307.6	-
65-74	196.3	5,104.3	4,407.7	5,861.8	244.7	6,200.2	5,442.4	7,021.7	↑
75+	153.5	6,351.7	5,385.9	7,438.8	179.8	7,178.8	6,155.7	8,294.1	-

### Alcohol Related Admission Episodes (BROAD) - Wellingborough

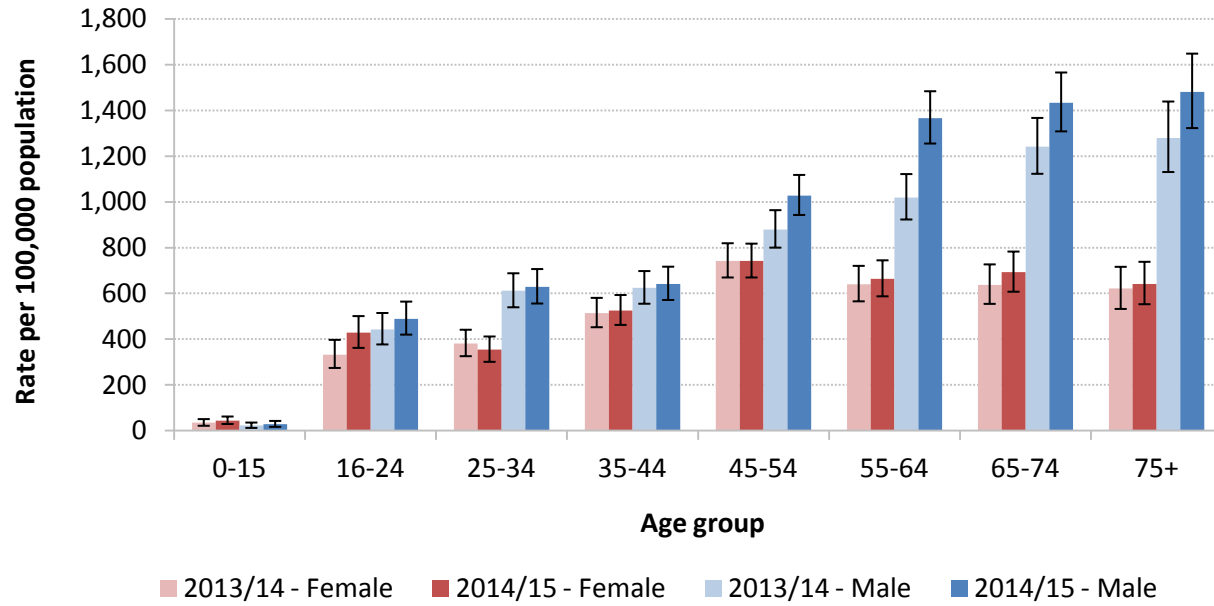


## Age Specific Rates by Gender, Narrow Measure – Northamptonshire

Age Group	2013/14 – Female				2014/15 – Female				Significant Change
	Estimated Events	Rate per 100,000 population	95% Lower Confidence Limit	95% Upper Confidence Limit	Estimated Events	Rate per 100,000 population	95% Lower Confidence Limit	95% Upper Confidence Limit	
0-15	24.4	35.0	22.0	51.2	31.2	44.3	29.9	62.4	-
16-24	118.2	332.5	274.8	397.5	152.4	428.7	362.4	501.4	↑
25-34	173.6	380.8	326.2	441.7	163.4	354.6	301.4	412.3	-
35-44	254.6	514.1	452.7	581.0	256.7	525.5	462.9	593.5	-
45-54	388.1	742.3	670.1	819.8	395.9	741.3	670.1	818.1	-
55-64	270.7	640.3	565.9	720.9	281.2	663.5	587.7	745.2	-
65-74	217.0	636.8	554.9	727.4	247.0	692.8	607.8	783.4	-
75+	181.4	621.0	532.7	716.8	191.1	641.4	553.3	738.6	-

Age Group	2013/14 – Male				2014/15 – Male				Significant Change
	Estimated Events	Rate per 100,000 population	95% Lower Confidence Limit	95% Upper Confidence Limit	Estimated Events	Rate per 100,000 population	95% Lower Confidence Limit	95% Upper Confidence Limit	
0-15	16.3	22.6	12.7	36.1	20.6	28.2	17.3	43.2	-
16-24	166.1	442.4	377.5	514.9	183.1	488.9	420.4	564.7	-
25-34	268.4	611.7	539.9	688.5	276.3	629.0	556.4	707.0	-
35-44	302.1	624.0	555.4	698.3	307.6	641.8	571.8	717.3	-
45-54	454.3	879.6	800.6	964.3	542.3	1,028.0	943.3	1,118.3	↑
55-64	415.6	1,019.2	923.6	1,122.1	561.4	1,366.3	1,255.6	1,484.1	↑
65-74	406.9	1,240.9	1,123.3	1,367.6	488.3	1,433.1	1,308.8	1,566.0	↑
75+	273.2	1,279.1	1,131.1	1,439.2	327.4	1,480.8	1,323.1	1,648.4	-

### Alcohol Related Admission Episodes (NARROW) - Northamptonshire

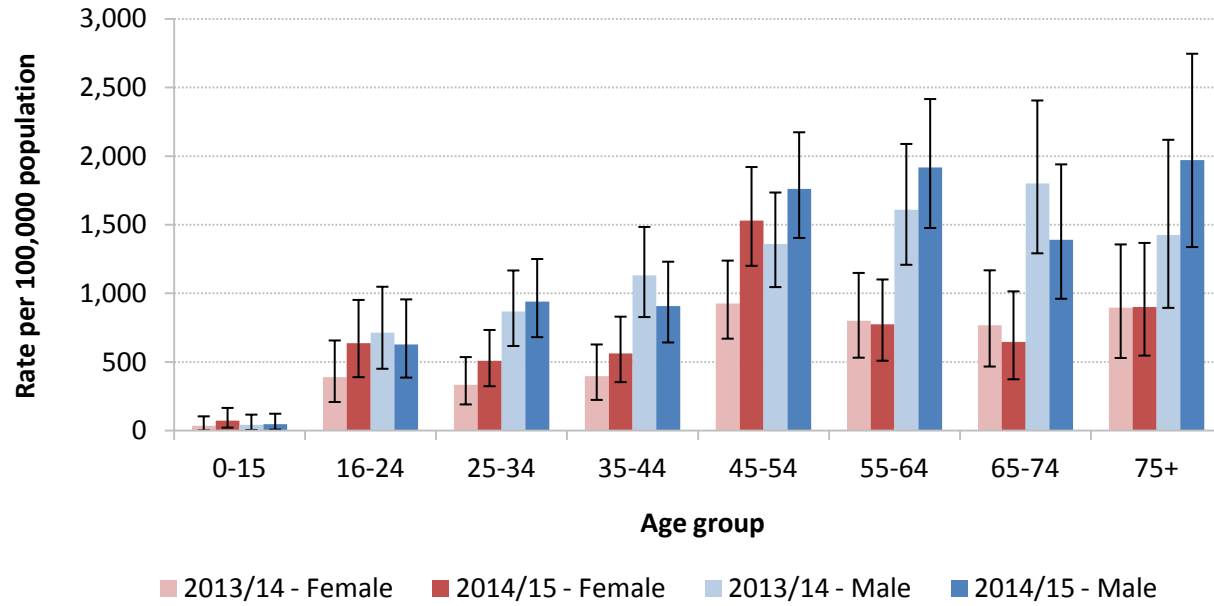


## Age Specific Rates by Gender, Narrow Measure – Corby

Age Group	2013/14 – Female				2014/15 – Female				Significant Change
	Estimated Events	Rate per 100,000 population	95% Lower Confidence Limit	95% Upper Confidence Limit	Estimated Events	Rate per 100,000 population	95% Lower Confidence Limit	95% Upper Confidence Limit	
0-15	2.5	35.8	3.5	105.5	5.1	72.8	23.2	166.6	-
16-24	13.5	389.5	209.7	658.1	21.9	637.6	390.5	953.5	-
25-34	16.6	334.3	192.2	537.0	26.0	508.9	324.8	734.6	-
35-44	16.8	396.5	225.1	628.9	23.8	562.9	354.7	831.4	-
45-54	44.2	927.6	671.1	1,239.9	74.0	1,530.7	1,201.8	1,921.4	↑
55-64	28.6	801.4	532.6	1,150.1	28.9	776.0	510.6	1,102.5	-
65-74	20.7	767.3	468.0	1,169.1	17.7	645.6	375.4	1,015.8	-
75+	20.0	895.1	530.4	1,357.9	20.8	901.8	547.9	1,368.8	-

Age Group	2013/14 – Male				2014/15 – Male				Significant Change
	Estimated Events	Rate per 100,000 population	95% Lower Confidence Limit	95% Upper Confidence Limit	Estimated Events	Rate per 100,000 population	95% Lower Confidence Limit	95% Upper Confidence Limit	
0-15	2.9	42.0	6.1	117.9	3.4	48.3	8.8	124.5	-
16-24	24.3	715.3	451.9	1,049.4	21.1	628.7	387.7	957.4	-
25-34	41.4	869.2	617.9	1,168.0	45.2	939.7	682.3	1,251.6	-
35-44	49.0	1,132.3	828.4	1,485.0	39.7	906.7	643.5	1,231.8	-
45-54	64.1	1,360.7	1,046.9	1,735.9	85.1	1,760.8	1,404.8	2,174.7	-
55-64	55.1	1,608.6	1,209.4	2,089.6	67.9	1,916.8	1,477.5	2,416.7	-
65-74	43.3	1,799.8	1,292.9	2,406.3	34.0	1,389.7	961.8	1,940.8	-
75+	23.2	1,426.3	895.6	2,119.9	32.8	1,971.2	1,338.6	2,746.7	-

### Alcohol Related Admission Episodes (NARROW) - Corby



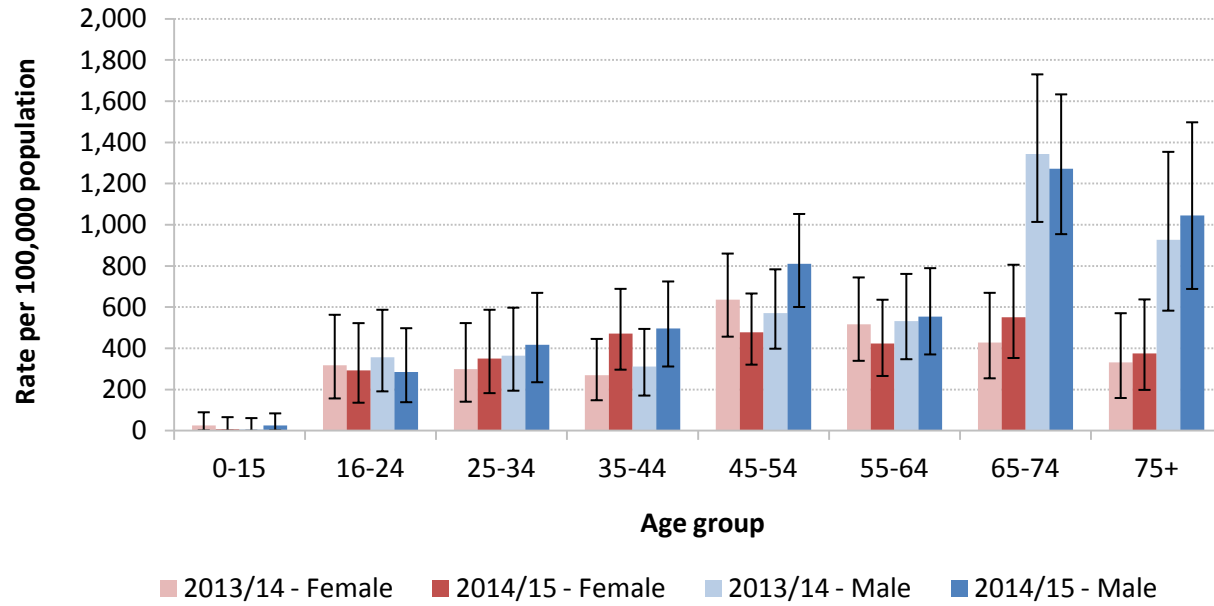


## Age Specific Rates by Gender, Narrow Measure – Daventry

Age Group	2013/14 – Female				2014/15 – Female				Significant Change
	Estimated Events	Rate per 100,000 population	95% Lower Confidence Limit	95% Upper Confidence Limit	Estimated Events	Rate per 100,000 population	95% Lower Confidence Limit	95% Upper Confidence Limit	
0-15	1.8	25.2	1.5	90.0	0.5	7.1	0.0	66.3	-
16-24	11.1	318.1	157.2	563.5	10.3	292.6	136.3	522.9	-
25-34	10.9	298.4	141.3	523.2	13.3	350.9	183.0	587.8	-
35-44	14.5	268.8	148.4	446.2	24.4	470.8	296.9	689.4	-
45-54	41.5	636.2	457.1	860.7	32.0	478.2	321.2	666.9	-
55-64	27.6	516.1	339.9	744.8	22.6	423.5	266.2	636.6	-
65-74	18.5	427.3	254.8	670.0	25.2	551.4	353.6	806.5	-
75+	11.4	331.4	159.3	571.2	13.1	374.9	198.7	638.1	-

Age Group	2013/14 – Male				2014/15 – Male				Significant Change
	Estimated Events	Rate per 100,000 population	95% Lower Confidence Limit	95% Upper Confidence Limit	Estimated Events	Rate per 100,000 population	95% Lower Confidence Limit	95% Upper Confidence Limit	
0-15	0.6	7.3	0.0	61.7	1.9	25.1	1.4	84.7	-
16-24	14.3	356.9	191.5	587.8	11.3	284.8	139.0	498.3	-
25-34	14.3	364.6	194.9	598.0	16.2	417.2	235.8	670.0	-
35-44	16.0	311.4	171.1	494.9	24.4	496.3	312.3	725.2	-
45-54	36.7	570.5	398.7	784.3	52.9	810.6	601.4	1,053.0	-
55-64	27.9	532.3	347.7	761.9	29.6	554.3	370.9	789.9	-
65-74	57.8	1,343.3	1,014.3	1,731.0	57.5	1,271.9	955.1	1,633.9	-
75+	24.4	927.2	583.4	1,354.7	28.2	1,045.5	688.8	1,498.3	-

### Alcohol Related Admission Episodes (NARROW) - Daventry

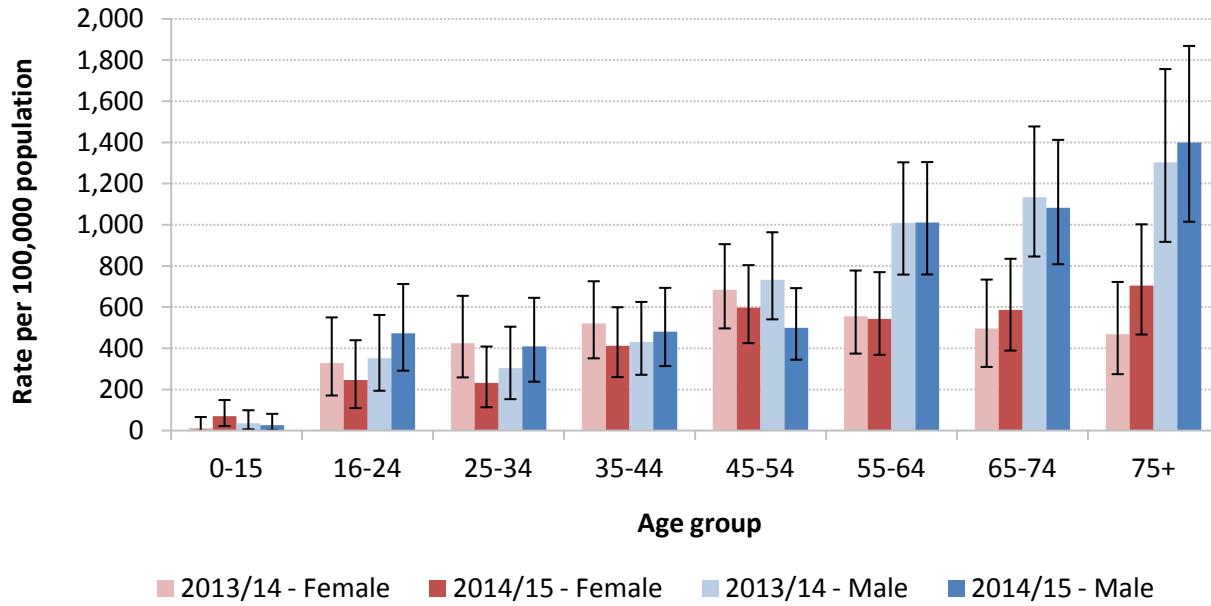


## Age Specific Rates by Gender, Narrow Measure – East Northamptonshire

Age Group	2013/14 – Female				2014/15 – Female				Significant Change
	Estimated Events	Rate per 100,000 population	95% Lower Confidence Limit	95% Upper Confidence Limit	Estimated Events	Rate per 100,000 population	95% Lower Confidence Limit	95% Upper Confidence Limit	
0-15	1.1	12.6	0.3	67.0	5.6	70.7	23.1	149.4	-
16-24	13.3	328.8	171.5	550.8	9.9	246.3	110.4	440.0	-
25-34	20.0	424.9	259.3	655.5	11.2	231.9	114.2	409.3	-
35-44	32.5	521.9	351.9	726.3	25.0	412.4	260.8	600.1	-
45-54	46.3	684.0	497.5	906.3	41.3	597.6	425.6	804.6	-
55-64	31.8	555.3	374.9	778.4	31.1	543.8	368.9	770.6	-
65-74	23.3	496.4	310.2	734.3	29.3	586.8	389.5	835.3	-
75+	18.8	468.2	274.9	722.9	29.3	705.0	467.7	1,002.9	-

Age Group	2013/14 – Male				2014/15 – Male				Significant Change
	Estimated Events	Rate per 100,000 population	95% Lower Confidence Limit	95% Upper Confidence Limit	Estimated Events	Rate per 100,000 population	95% Lower Confidence Limit	95% Upper Confidence Limit	
0-15	3.2	36.5	7.1	100.0	2.4	26.8	2.8	82.3	-
16-24	15.8	351.2	194.6	562.7	21.7	472.5	292.0	713.2	-
25-34	13.0	303.8	153.6	505.6	17.7	410.0	238.6	645.8	-
35-44	25.0	430.8	272.0	625.9	27.2	481.0	314.4	694.2	-
45-54	49.6	732.0	541.3	964.3	34.7	500.0	345.3	693.0	-
55-64	56.3	1,008.8	758.5	1,303.9	56.3	1,010.4	759.2	1,305.1	-
65-74	53.2	1,134.1	846.5	1,478.2	53.1	1,082.9	809.1	1,412.8	-
75+	40.0	1,302.8	917.7	1,756.6	44.7	1,399.2	1,015.3	1,869.0	-

### Alcohol Related Admission Episodes (NARROW) - East Northamptonshire

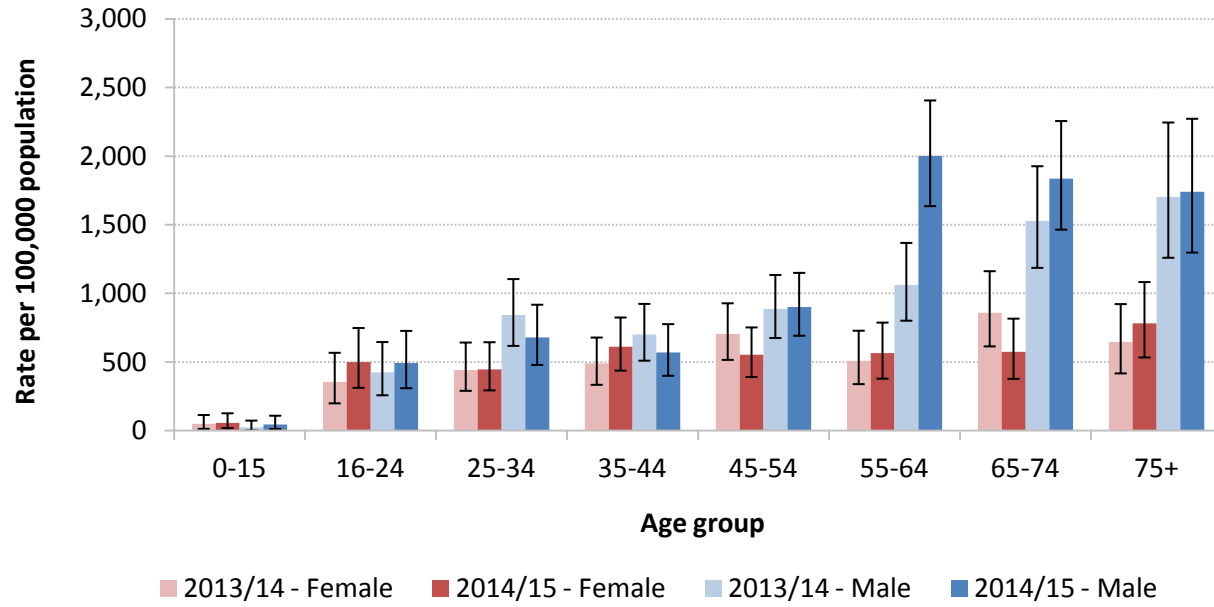


### Age Specific Rates by Gender, Narrow Measure – Kettering

Age Group	2013/14 – Female				2014/15 – Female				Significant Change
	Estimated Events	Rate per 100,000 population	95% Lower Confidence Limit	95% Upper Confidence Limit	Estimated Events	Rate per 100,000 population	95% Lower Confidence Limit	95% Upper Confidence Limit	
0-15	4.7	49.3	14.2	114.9	5.6	57.8	19.7	127.6	-
16-24	16.2	354.1	200.0	568.3	22.6	499.4	313.2	748.7	-
25-34	27.0	442.4	291.2	642.9	27.6	446.7	294.5	645.3	-
35-44	33.8	489.7	334.9	679.5	41.7	612.6	438.3	825.3	-
45-54	48.4	705.9	516.6	928.9	39.2	553.5	391.8	753.1	-
55-64	29.0	508.3	340.1	729.3	31.9	563.9	379.6	788.2	-
65-74	41.1	858.1	615.0	1,162.6	28.9	574.9	378.4	817.1	-
75+	27.5	646.1	418.1	923.0	33.8	781.3	534.1	1,083.5	-

Age Group	2013/14 – Male				2014/15 – Male				Significant Change
	Estimated Events	Rate per 100,000 population	95% Lower Confidence Limit	95% Upper Confidence Limit	Estimated Events	Rate per 100,000 population	95% Lower Confidence Limit	95% Upper Confidence Limit	
0-15	2.4	24.2	2.5	74.3	4.6	45.7	13.6	110.0	-
16-24	20.7	425.0	258.8	646.6	23.8	492.7	310.5	727.8	-
25-34	49.3	841.5	618.5	1,105.3	39.9	679.1	479.8	918.4	-
35-44	47.3	699.4	510.9	924.6	38.2	569.6	400.6	777.0	-
45-54	61.2	887.0	675.9	1,135.1	63.6	901.9	692.4	1,150.5	-
55-64	57.7	1,061.1	802.0	1,368.7	108.8	2,000.4	1,636.6	2,406.5	↑
65-74	69.7	1,528.5	1,187.0	1,927.2	87.3	1,834.7	1,465.2	2,256.4	-
75+	49.5	1,702.1	1,260.5	2,245.7	52.7	1,740.8	1,298.1	2,273.0	-

### Alcohol Related Admission Episodes (NARROW) - Kettering

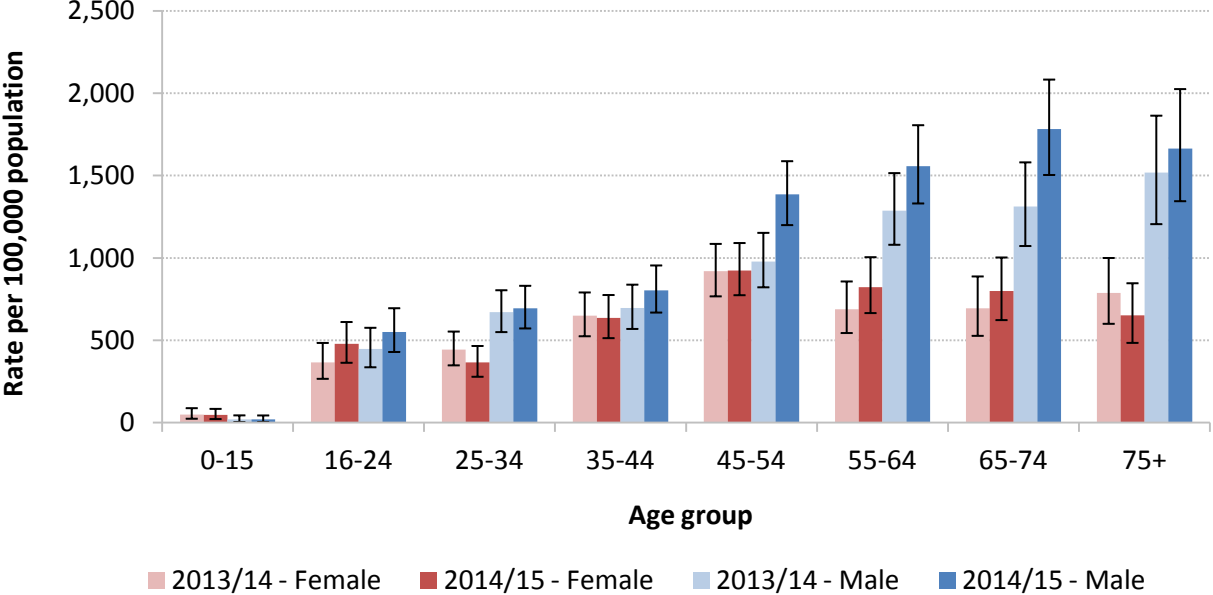


## Age Specific Rates by Gender, Narrow Measure – Northampton

Age Group	2013/14 – Female				2014/15 – Female				Significant Change
	Estimated Events	Rate per 100,000 population	95% Lower Confidence Limit	95% Upper Confidence Limit	Estimated Events	Rate per 100,000 population	95% Lower Confidence Limit	95% Upper Confidence Limit	
0-15	11.1	49.9	24.8	88.9	10.8	47.7	22.8	84.4	-
16-24	46.7	365.2	267.0	484.7	61.4	479.4	364.3	611.8	-
25-34	76.2	443.9	348.7	554.0	62.7	365.0	279.5	466.3	-
35-44	96.6	648.9	525.4	791.2	95.7	636.2	514.0	775.7	-
45-54	133.9	919.0	767.7	1,085.9	136.6	923.6	774.6	1,091.4	-
55-64	79.1	688.9	545.0	857.9	95.5	823.2	666.1	1,005.4	-
65-74	60.7	693.4	527.8	888.4	72.2	799.0	623.5	1,003.6	-
75+	63.5	788.0	600.9	1,000.6	53.4	652.3	485.2	847.2	-

Age Group	2013/14 – Male				2014/15 – Male				Significant Change
	Estimated Events	Rate per 100,000 population	95% Lower Confidence Limit	95% Upper Confidence Limit	Estimated Events	Rate per 100,000 population	95% Lower Confidence Limit	95% Upper Confidence Limit	
0-15	4.4	19.4	4.8	45.2	4.4	19.2	4.7	44.6	-
16-24	57.2	446.7	337.1	576.7	70.55	551.3	429.9	695.5	-
25-34	112.2	670.1	550.6	804.7	116.1	693.9	572.9	831.5	-
35-44	108.1	695.4	569.8	838.6	127	802.8	669.2	955.2	-
45-54	140.7	978.9	822.5	1,153.0	203.17	1,385.2	1,200.2	1,588.1	↑
55-64	140.2	1,286.6	1,080.6	1,515.8	171.73	1,557.6	1,331.5	1,806.6	-
65-74	107.8	1,312.4	1,073.2	1,581.0	151.45	1,781.8	1,504.4	2,083.5	↑
75+	86.0	1,517.6	1,206.0	1,864.4	96.73	1,663.7	1,345.2	2,025.8	-

### Alcohol Related Admission Episodes (NARROW) - Northampton



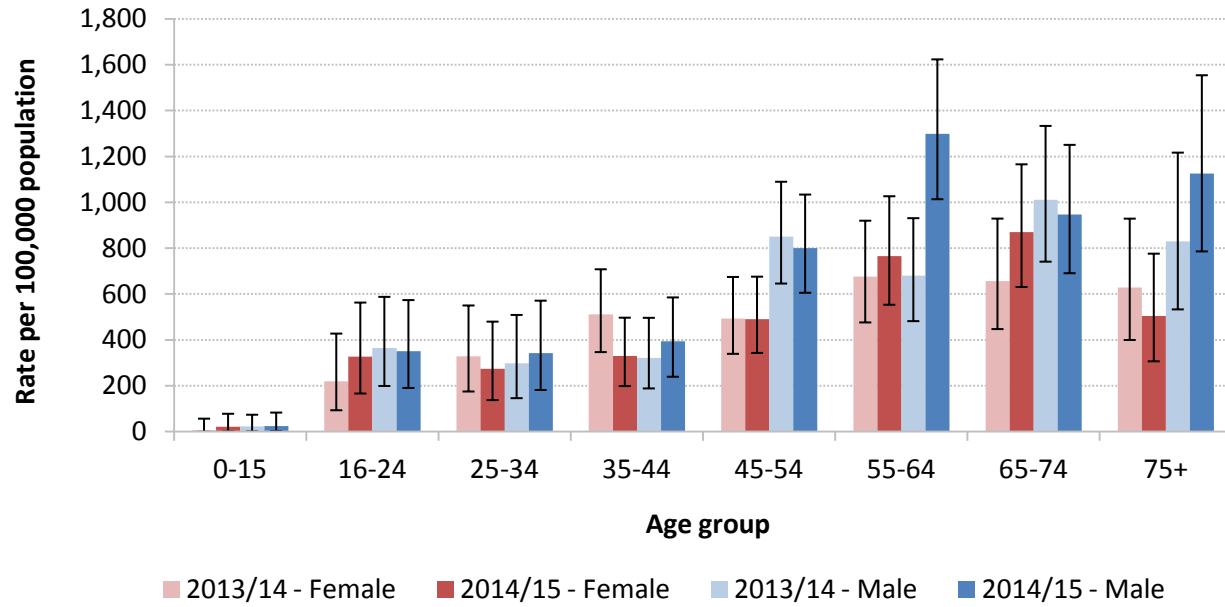


## Age Specific Rates by Gender, Narrow Measure – South Northamptonshire

Age Group	2013/14 – Female				2014/15 – Female				Significant Change
	Estimated Events	Rate per 100,000 population	95% Lower Confidence Limit	95% Upper Confidence Limit	Estimated Events	Rate per 100,000 population	95% Lower Confidence Limit	95% Upper Confidence Limit	
0-15	0.5	6.1	0.0	57.1	1.8	21.4	1.3	78.4	-
16-24	8.1	219.9	93.8	428.0	12.2	327.3	166.6	563.3	-
25-34	13.6	328.3	175.5	550.6	11.6	274.3	138.1	480.1	-
35-44	33.5	511.5	347.3	708.5	20.9	329.4	199.1	497.3	-
45-54	36.0	493.1	339.8	675.0	36.5	490.0	343.8	676.3	-
55-64	38.8	676.6	476.6	920.4	43.6	766.0	553.8	1,026.9	-
65-74	31.5	656.7	447.7	929.5	44.1	869.9	631.2	1,166.2	-
75+	24.2	628.9	400.1	929.2	20.0	503.8	307.1	776.5	-

Age Group	2013/14 – Male				2014/15 – Male				Significant Change
	Estimated Events	Rate per 100,000 population	95% Lower Confidence Limit	95% Upper Confidence Limit	Estimated Events	Rate per 100,000 population	95% Lower Confidence Limit	95% Upper Confidence Limit	
0-15	2.0	22.6	1.2	74.2	2.1	24.3	2.8	83.7	-
16-24	15.4	365.2	199.6	588.2	14.7	351.0	191.0	574.2	-
25-34	11.9	297.0	146.5	509.4	13.7	341.8	182.2	571.5	-
35-44	18.8	321.0	188.9	496.8	22.0	393.9	239.9	585.8	-
45-54	60.3	850.4	646.2	1,090.1	57.5	799.7	606.1	1,034.3	-
55-64	38.5	680.5	482.4	931.4	73.9	1,298.6	1,013.9	1,623.8	↑
65-74	48.2	1,010.9	741.6	1,333.6	47.3	946.6	691.2	1,251.0	-
75+	25.2	829.8	533.6	1,217.2	36.1	1,125.1	786.5	1,554.6	-

### Alcohol Related Admission Episodes (NARROW) - South Northamptonshire



## Age Specific Rates by Gender, Narrow Measure – Wellingborough

Age Group	2013/14 – Female				2014/15 – Female				Significant Change
	Estimated Events	Rate per 100,000 population	95% Lower Confidence Limit	95% Upper Confidence Limit	Estimated Events	Rate per 100,000 population	95% Lower Confidence Limit	95% Upper Confidence Limit	
0-15	2.9	37.4	5.5	105.1	1.7	21.4	1.4	83.2	-
16-24	9.3	265.4	117.2	486.5	14.1	401.7	218.5	670.6	-
25-34	9.3	191.3	85.1	353.3	11.2	231.6	113.9	408.2	-
35-44	27.0	505.2	325.7	724.7	25.3	485.9	310.8	709.0	-
45-54	37.9	687.8	481.0	937.3	36.3	643.0	447.0	883.5	-
55-64	35.8	760.7	527.4	1,047.6	27.7	592.3	390.3	855.2	-
65-74	21.2	529.1	324.3	800.7	29.7	702.7	469.8	1,000.7	-
75+	16.0	477.5	272.3	773.5	20.8	616.7	374.3	935.1	-

Age Group	2013/14 – Male				2014/15 – Male				Significant Change
	Estimated Events	Rate per 100,000 population	95% Lower Confidence Limit	95% Upper Confidence Limit	Estimated Events	Rate per 100,000 population	95% Lower Confidence Limit	95% Upper Confidence Limit	
0-15	1.0	12.7	0.3	71.0	1.6	23.4	1.4	81.0	-
16-24	18.4	490.5	284.7	759.2	20.1	535.5	326.1	824.6	-
25-34	26.3	610.2	393.6	882.9	27.5	634.6	411.0	907.5	-
35-44	38.0	759.0	528.9	1,030.6	29.1	598.1	399.5	856.6	-
45-54	41.7	777.3	556.3	1,047.5	45.2	817.8	593.3	1,088.5	-
55-64	40.0	879.2	619.6	1,186.0	53.1	1,187.1	887.4	1,549.5	-
65-74	26.9	698.6	452.1	1,006.0	57.7	1,461.1	1,104.8	1,885.3	↑
75+	24.9	1,029.0	652.8	1,502.2	36.2	1,444.7	1,006.5	1,989.6	-

### Alcohol Related Admission Episodes (NARROW) - Wellingborough

