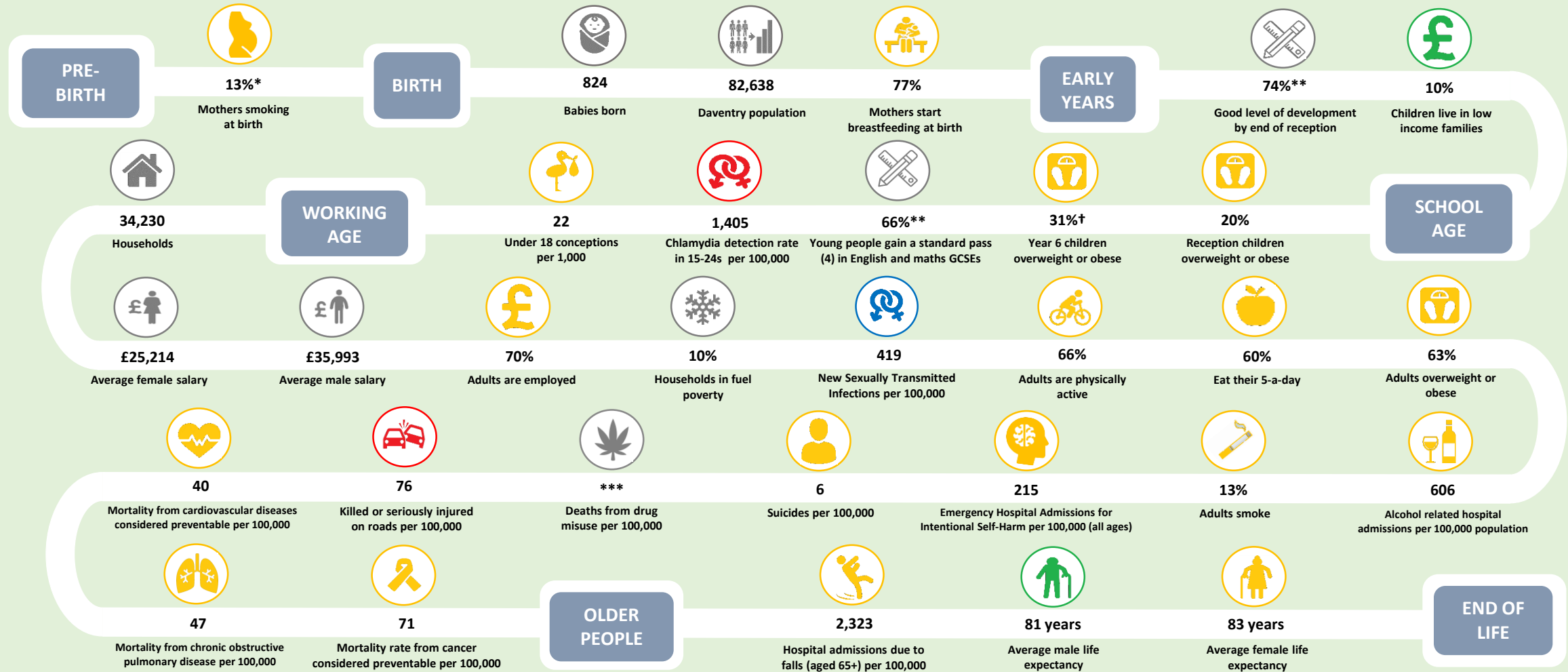


# Health and Wellbeing in Daventry February 2019



Compared to benchmark Better Similar Worse Lower Similar Higher Low High Not Compared

\* Approximated from CCG figure. \*\* Local Data, no comparators.

† 2016/17 figure used due to low response to NCMP for Y6 in 2017/18.

\*\*\* Rate not calculated due to low numbers.