

# Primary School Child Health Profile

Northampton  
September 2018

Northampton is similar to or worse than the national England on the majority of the child health indicators included in this profile.

Northampton is significantly better than the national average on the following indicators:

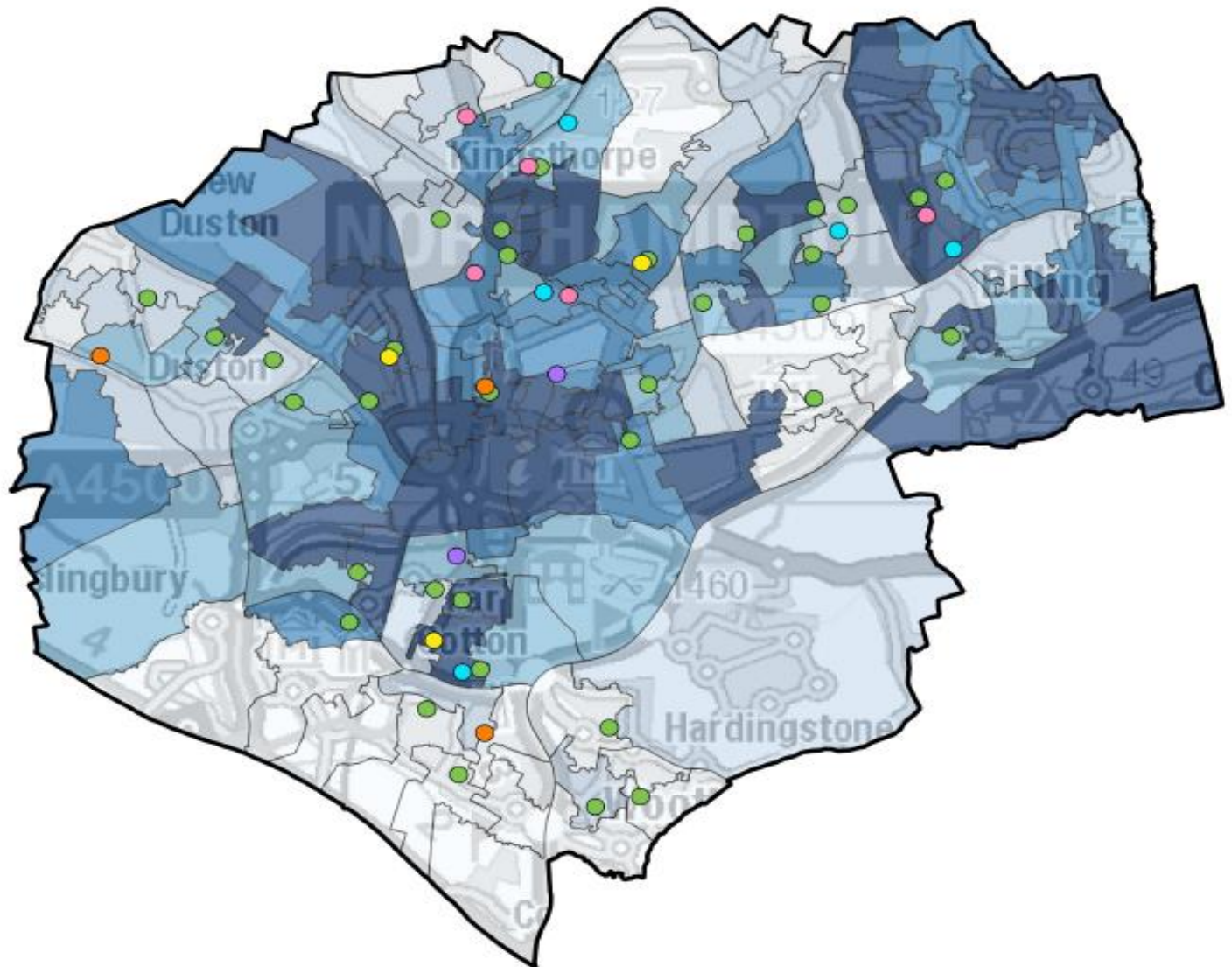
- Proportion of under 16s in low income families
- Breastfeeding initiation

Northampton is significantly worse than the national average on the following indicators:

- Proportion of overweight or obese children in Year 6
- Proportion of children achieving 5+ GCSEs at grades A\*-C
- Proportion of pregnant women smoking at time of delivery
- Teenage pregnancy rate
- Admissions to hospital for lower respiratory conditions
- Admissions to hospital for asthma, diabetes and epilepsy
- Admissions to hospital for intentional self-harm

# Area Map

Map of school locations with LSOA IMD 2015 quintile rankings  
(1 being 20% most deprived areas nationally)



## School Type

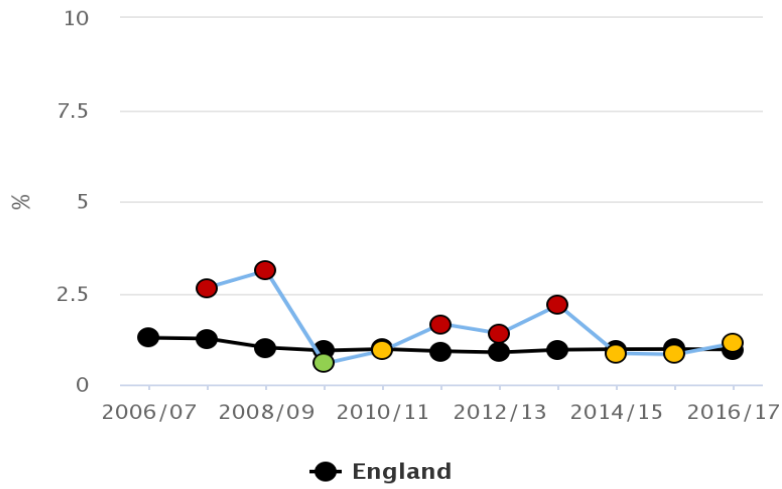
- All Through School
- Nursery School
- Primary School
- Secondary School
- Pupil Referral Unit
- Special School

## LSOA IMD 2015 Quintile

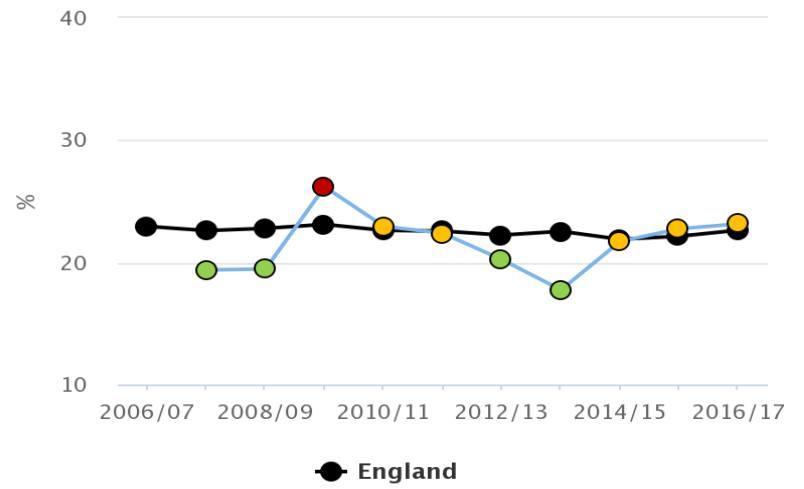
- 1 (most deprived)
- 2
- 3
- 4
- 5 (least deprived)

# Health Improvement

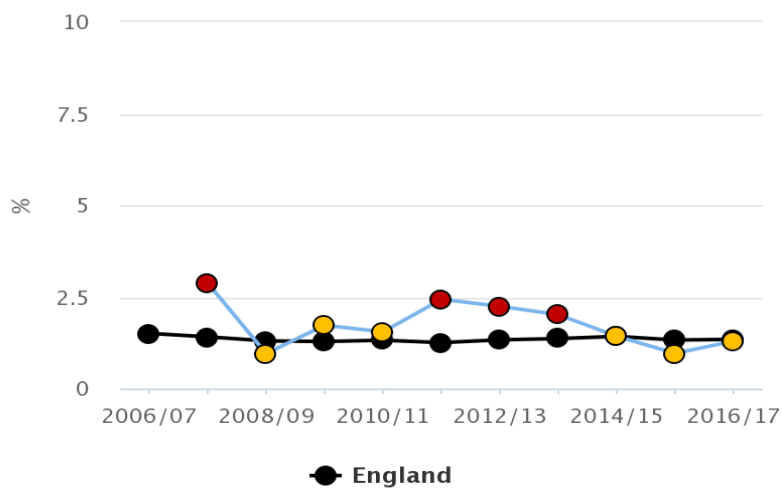
Reception: Prevalence of underweight – Northampton



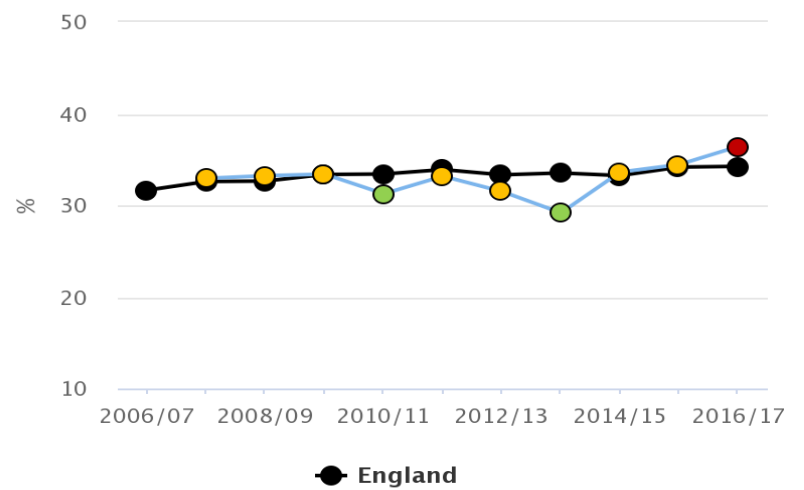
Reception: Prevalence of overweight (including obese) – Northampton



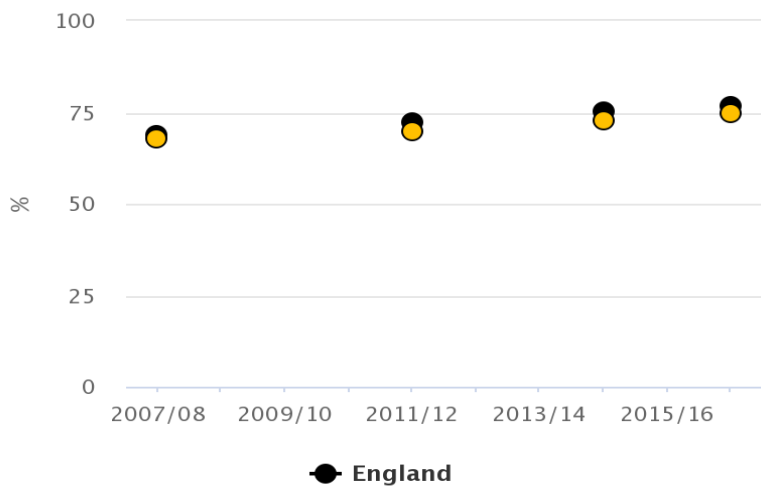
Year 6: Prevalence of underweight – Northampton



Year 6: Prevalence of overweight (including obese) – Northampton



4.02 – Proportion of five year old children free from dental decay – Northampton



**Key:**

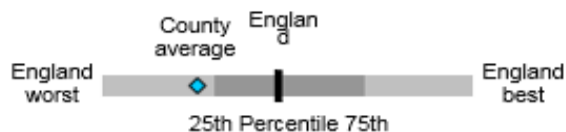
- Significantly better than the England average
- Not significantly different from the England average
- Significantly worse than the England average

# Child Health Summary

The chart below shows how the health of children in this area compares with the rest of England. This area's result for each indicator is shown as a circle. The average for England is shown by the black line, which is always at the centre of the chart. The range of results for all local areas in England is shown as a grey bar. A red circle means that this area is significantly worse than England, while a green circle means that this area is significantly better than England for that indicator. However, a green circle may still indicate an important public health problem.

## Key:

- Significantly better than England average
- Not significantly different from England average
- Significantly worse than England average
- No significance can be calculated



Indicator	Year	Unit	Local Value	Eng Avg	Eng Worst	England Range	Eng Best
1 Children in low income families (under 16s)	2015	%	15.8	16.8	30.5		2.7
2 GCSEs achieved (5A*-C including English & Maths)	2015/16	%	53.4	57.8	44.8		78.7
3 Pupil absence	2016/17	%	4.6	4.7	6.0		2.6
4 Killed and seriously injured on roads	2014-16	rate per 100,000	32.1	39.7	567.0		13.5
5 Low birth weight of term babies	2016	%	2.8	2.8	5.8		0.7
6 Breastfeeding initiation	2016/17	%	78.7	74.5	37.9		96.7
7 Smoking status at time of delivery	2016/17	%	13.8	10.7	28.1		2.3
8 5 year olds free of tooth decay	2016/17	%	74.6	76.7	50.6		95.6
9 Excess weight in Reception	2016/17	%	23.1	22.6	31.5		14.7
10 Excess weight in Year 6	2016/17	%	36.4	34.2	43.9		21.2
11 Teenage pregnancy rate	2016	rate per 1,000	25.9	18.8	36.7		3.3
12 Smoking prevalence - regular smokers aged 15	2009-12	%	8.3	8.7	12.9		3.2
13 Infant death	2014-16	rate per 1,000	4.6	3.9	7.9		0.0
14 Hospital stays for unintentional and deliberate injuries (0-14 years)	2016/17	rate per 10,000	104.0	101.5	190.5		43.3
15 Hospital stays for lower respiratory infections	2016/17	rate per 100,000	603.1	446.4	940.6		38.0
16 Alcohol specific hospital stays, under 18s	2014/15-16/17	n/a	35.0	34.2	100.0		6.5
17 Hospital stays for asthma, diabetes and epilepsy	2016/17	rate per 100,000	364.5	303.7	611.4		35.8
18 Hospital stays for intentional self-harm	2016/17	rate per 100,000	378.1	185.3	578.9		50.6
19 Deprivation score (IMD 2015)	2015	n/a	24.3	21.8	42.0		5.0

Sources: Public Health England (Public Health Outcomes Framework; Local Alcohol Profiles for England; Local Health; Local Authority Health Profiles)  
NHS Outcomes Framework

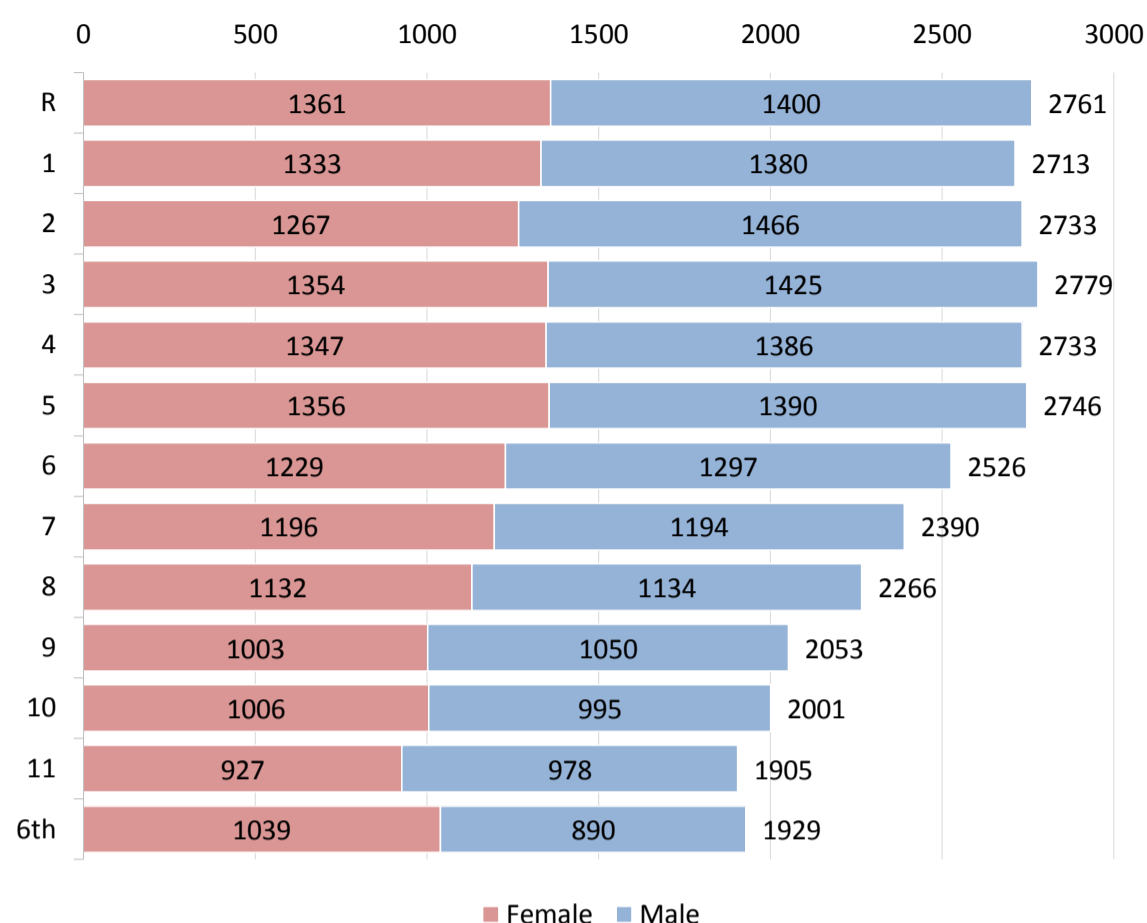
Data accessed August 2018

# School Context Profile

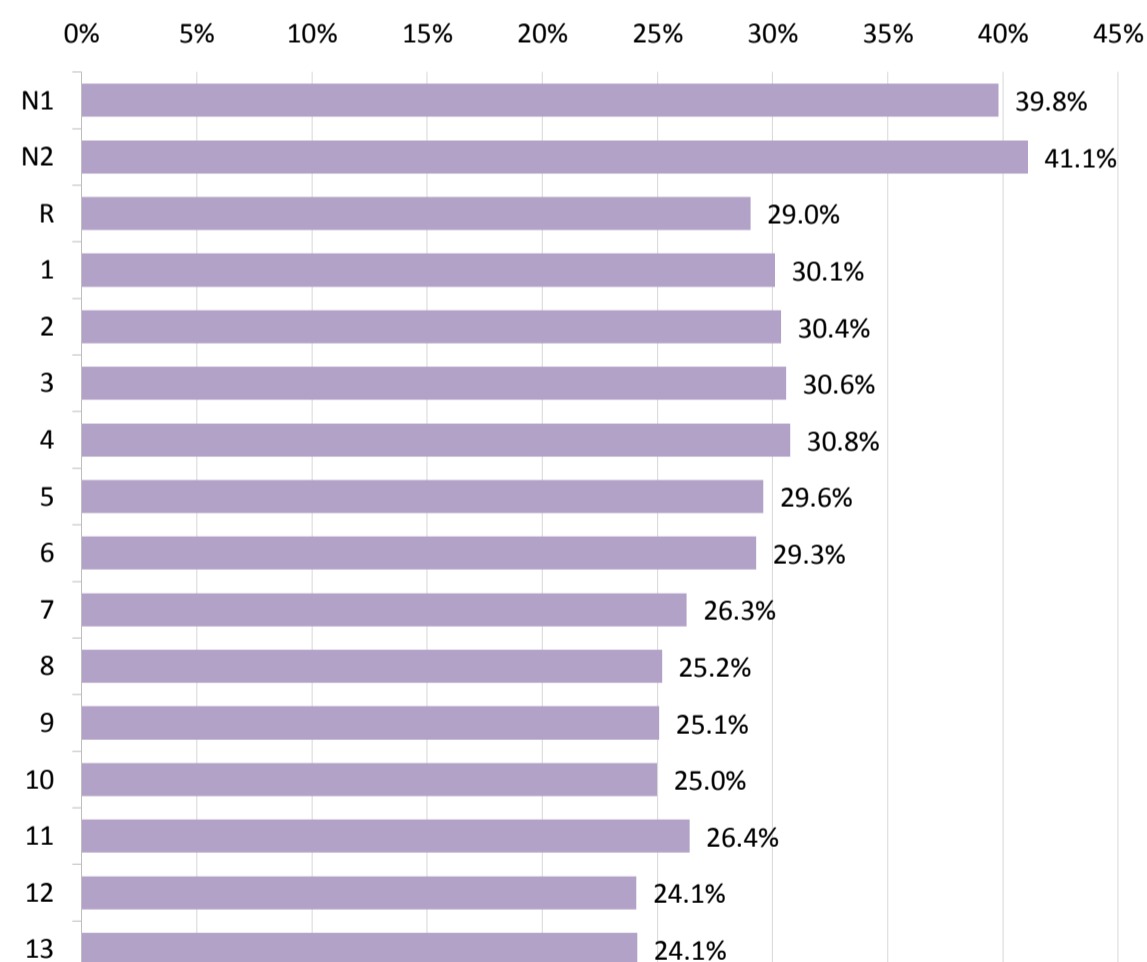
## Demographics & Pupil Characteristics

Pupil Characteristics	2016	2017	2018
Number on Roll	31301	32225	32890
<b>% Eligible for free school meals (Not USM)</b>	<b>2016</b>	<b>2017</b>	<b>2018</b>
	15.0%	12.7%	10.7%
England % FSM Primary/Nursery	14.5%	14.1%	13.7%
England % FSM Secondary	13.2%	12.9%	12.4%
England % FSM Special	36.5%	35.9%	35.9%
<b>% of each gender on roll</b>	<b>2016</b>	<b>2017</b>	<b>2018</b>
Girls	49%	49%	49%
Boys	51%	51%	51%
<b>Special Educational Needs</b>	<b>2016</b>	<b>2017</b>	<b>2018</b>
% with SEN Statement/EHCP	1.5%	1.3%	1.1%
% with SEN but no Statement	9.0%	10.2%	10.3%
<b>2018 Statements/EHCP England Primary = 1.4%</b>	<b>2018 Statements/EHCP England Secondary = 1.6%</b>		
<b>by Primary Need</b>	<b>2016</b>	<b>2017</b>	<b>2018</b>
Autistic Spectrum Disorder	345	360	370
Behaviour, Emotional & Social Difficulties (SEMH)	542	580	101
Hearing Impairment	76	89	853
Moderate Learning Difficulty	816	920	10
Multi-Sensory Impairment	<5	<5	134
Non Specific	231	264	246
Other Difficulty / Disability	140	173	120
Physical Disability	100	126	14
Profound & Multiple Learning Difficulty	6	9	587
Speech, Language and Communication Needs	592	687	763
Severe Learning Difficulty	48	47	55
Specific Learning Difficulty	336	381	431
Visual Impairment	38	52	58
<b>Language</b>	<b>2016</b>	<b>2017</b>	<b>2018</b>
<b>England Primary % with English as a second language</b>	<b>20.1%</b>	<b>20.6%</b>	<b>21.2%</b>
<b>England Secondary % with English as a second language</b>	<b>15.7%</b>	<b>16.2%</b>	<b>16.6%</b>
<b>School % EAL</b>	<b>26.1%</b>	<b>27.4%</b>	<b>28.8%</b>
English	21931	22712	23044
Hungarian	92	94	97
Lithuanian	364	392	442
Latvian	233	235	227
Polish	1343	1505	1561
Romanian	826	1072	1377
Serbian/Croatian/Bosnian	8	11	11
Slovak	23	29	33
Other	5109	5284	4589
<b>Ethnicity</b>	<b>2016</b>	<b>2017</b>	<b>2018</b>
None required (under 5 pre-2017)	0%		
Bangladeshi	4%	4%	4%
Indian	2%	3%	2%
Other Asian	1%	1%	1%
Pakistani	1%	1%	1%
Black African	7%	7%	7%
Black Caribbean	1%	1%	1%
Other Black	2%	2%	2%
Chinese	0%	0%	0%
Other Mixed	2%	2%	2%
White/Asian	1%	1%	1%
White/Black African	2%	2%	2%
White/Black Caribbean	3%	3%	3%
Not Yet Obtained	0%	0%	0%
Other Ethnic Group	1%	1%	1%
Refused	1%	0%	1%
White British	59%	57%	56%
White Irish	0%	0%	0%
Irish Traveller	0%	0%	0%
White Other	12%	14%	15%
Gypsy/Roma	0%	0%	0%
<b>Non White British</b>	<b>40%</b>	<b>42%</b>	<b>43%</b>
<b>England Primary % non WBRI</b>	<b>31.4%</b>	<b>32.1%</b>	<b>33.1%</b>
<b>England Secondary % non WBRI</b>	<b>27.9%</b>	<b>29.1%</b>	<b>30.3%</b>
<b>Northampton Exclusions</b>	<b>2014/15</b>	<b>2015/16</b>	<b>2016/17</b>
Permanent	44	26	39
% of pupils Fixed	2.2%	2.0%	2.0%
<b>Northamptonshire Exclusions</b>	<b>2014/15</b>	<b>2015/16</b>	<b>2016/17</b>
Permanent	139	95	141
% of pupils Fixed	1.8%	2.1%	2.2%

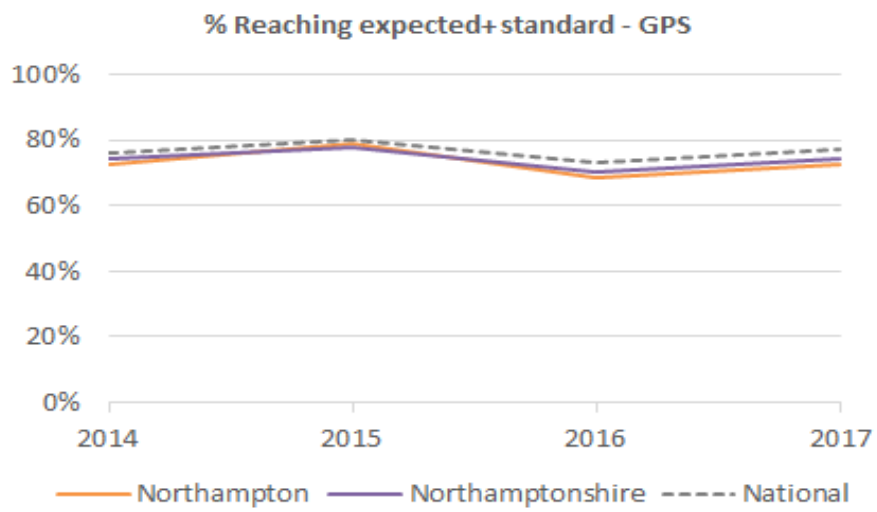
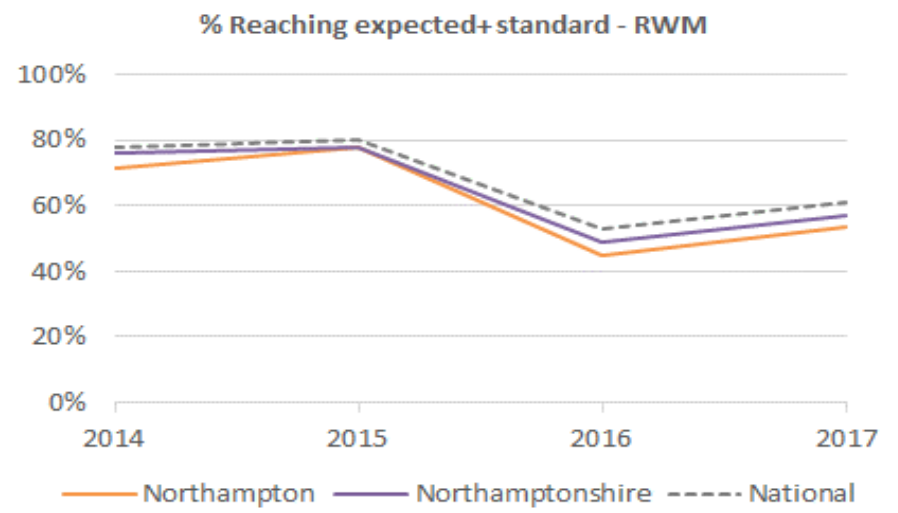
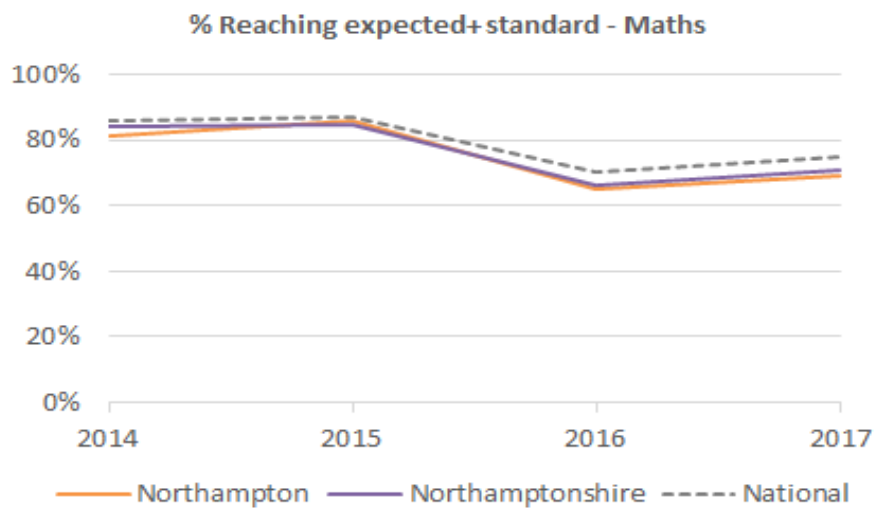
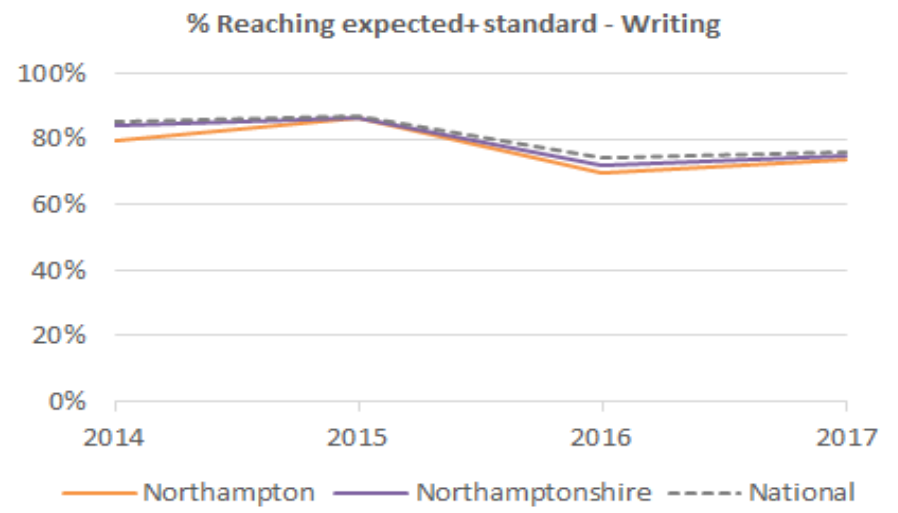
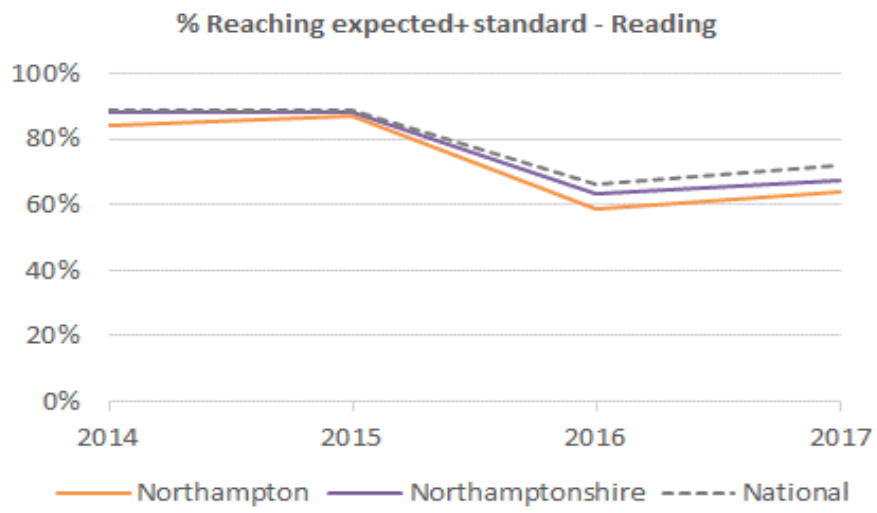
Cohort Numbers (Jan census 2018)



% EAL in each year group 2018



# School Attainment



Source: Department for Education, 2017 and 2018